

La

Roma

49

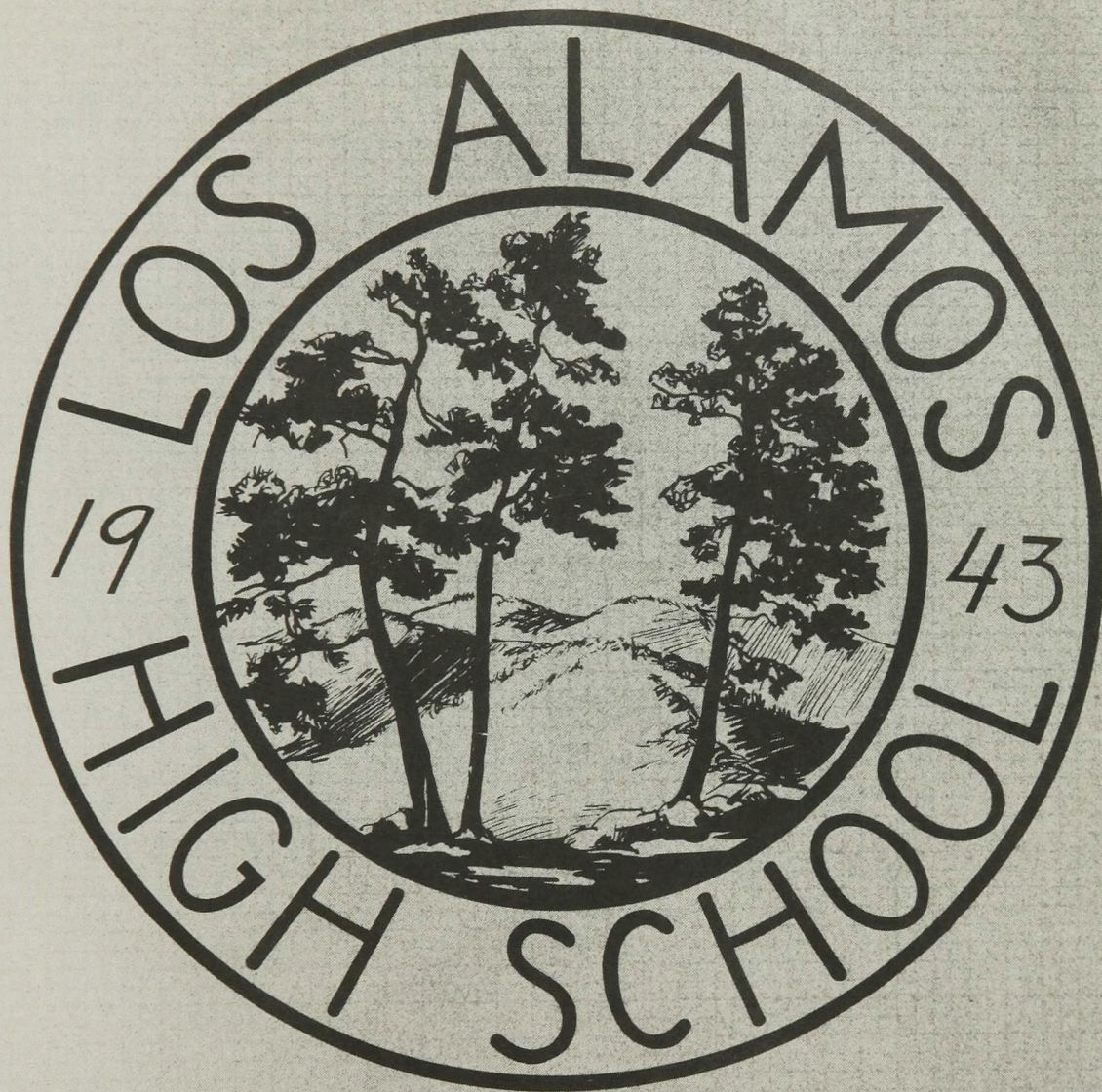


La Loma Staff are pleased to introduce "Buck," "Penny," and their little dog "Cents." These three characters represent the students of Los Alamos High School. You will find them throughout La Loma introducing various activities.

Margaret P. Martin

HIGH SCHOOL LIBRARY  
LOS ALAMOS, NEW MEXICO





## *La Loma*

Second Edition  
Presented by La Loma Staff  
Los Alamos High School  
Los Alamos, New Mexico

June 1949

HIGH SCHOOL LIBRARY  
LOS ALAMOS, NEW MEXICO

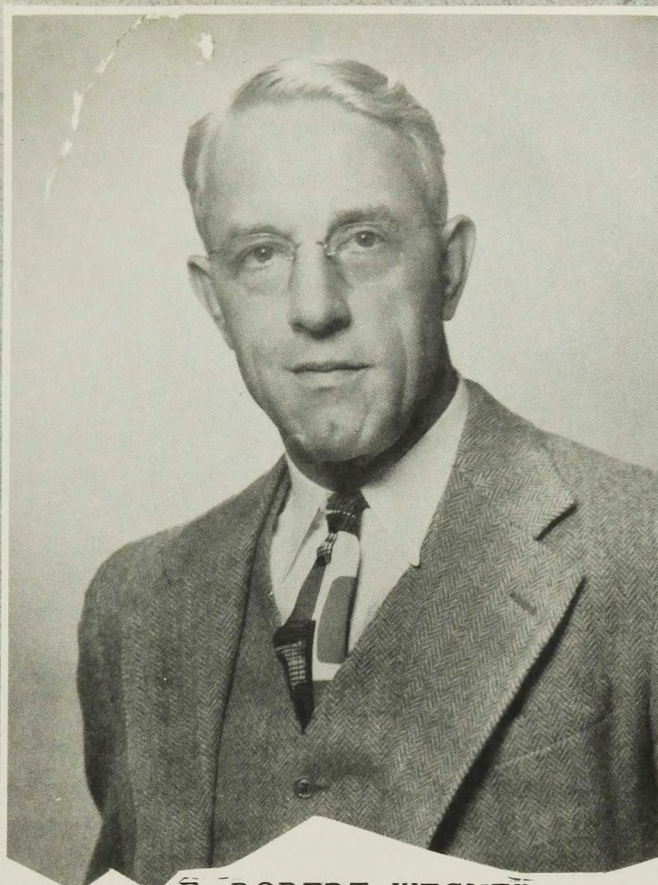
## *Foreword*

Los Alamos is a melting pot. We have come here from all parts of the United States, and with us we bring many pleasant memories of our home towns - memories of the past.

We are all here together for just a short time. We share a common present, and we work together to prepare ourselves for the future. The past is gone - the present will not be with us for long. All of our hopes, our fears, our dreams, and our plans are for the future.

But even so, we must never forget the years spent at Los Alamos High School. It is with this thought in mind that the Editor and Staff of La Loma present the 1949 edition of our year book, and hope that in the future, you may always remember Los Alamos with affection.

# Dedication



F. ROBERT WEGNER

Superintendent of Schools

There was a story told at Inyokern about Lieutenant Commander Wegner. He was in the Navy then and had received an ear injury during a rocket test. But he was an experienced teacher and Inyokern needed a school. In seven Quonset huts the Wegners, man and wife, built a temporary school and stocked it with teachers and with pupils who sat on empty ammunition box chairs and at empty ammunition box desks.

There are stories told at Los Alamos, too. A story about the Bob Wegner who likes to fish, who was lost for a day and a night in the mountains, but who came home finally, with the fish. And there are tales of him as a hunter, gardener, family picnicker, and dancer; there is even one about his ability as a plumber. His friendliness and civic consciousness are apparent to all. These are tales that portray a man of adventurous spirit, of inexhaustible energy, and of great love of life. To Los Alamos he is more than this.

Superintendent of Schools F. Robert Wegner came here in 1946 with a job to do and with his expressed stipulation that he be given authority to do it. He came to Central School. There is now an expanded Central, a Canyon School, a Mesa School, and a new high school under construction; there are teachers in these schools whose abilities are far above the usual; and the high school has achieved accredited recognition. Such things do not just happen by inaction; they take a tremendous amount of doing.

It is with the intent of expressing some appreciation for these qualities and accomplishments that this yearbook is dedicated to Mr. Wegner.

# *Contents*

Administration

Faculty

Classes

Activities

Personalities

Athletics

Advertising



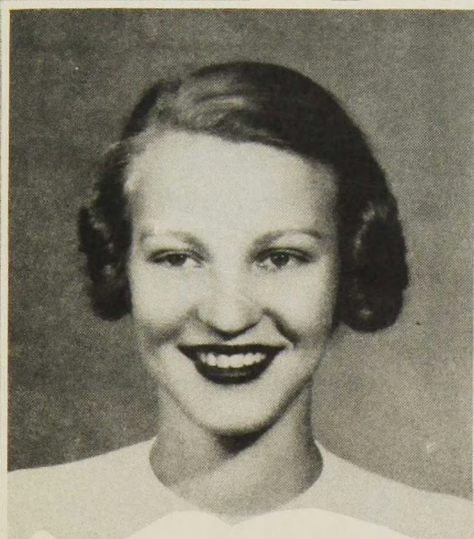
**ADMINISTRATION**

# High School Principal



EDWIN N. HURLBURT

B. S. - Western Michigan College, Kalamazoo, Michigan; M. A. - Claremont College, Claremont, California; Teacher and Athletic Coach, Allegan High School, Allegan, Michigan, 1929-1936; Teacher and Athletic Coach at Highland Park High School, Highland Park, Michigan, 1936-1942; Chief Petty Officer, United States Navy, 1942-1945; Principal, Owens Valley Unified School, Independence, California, 1946-1947.



CECILY PUTNAM  
(Mrs. Benjamin O. Putnam)

Secretary to Superintendent of Schools. Santa Fe Secretarial School, Santa Fe, New Mexico.



NAOMI WEAVER  
(Mrs. Harold Weaver)

Registrar, Secretary to High School Principal. Barnes Business School, Denver, Colorado.



**FACULTY**



MILDRED BURGHARDT

General Science, Biology. B. A. -  
Hope College, Holland, Michigan;  
M. A. - Columbia University,  
New York, New York.



SHIRLEY S. FRIES

English, Social Studies, Freshman  
Class Supervisor, A.B. - Cornell  
University, Ithica, New York.



FRANCES M. HARLAND

Languages, Sophomore Class  
Supervisor. B. A. - University of  
Oregon, Eugene, Oregon; M. A. -  
Columbia University, New York,  
New York; Ph. D. - New York  
University, New York, New York.

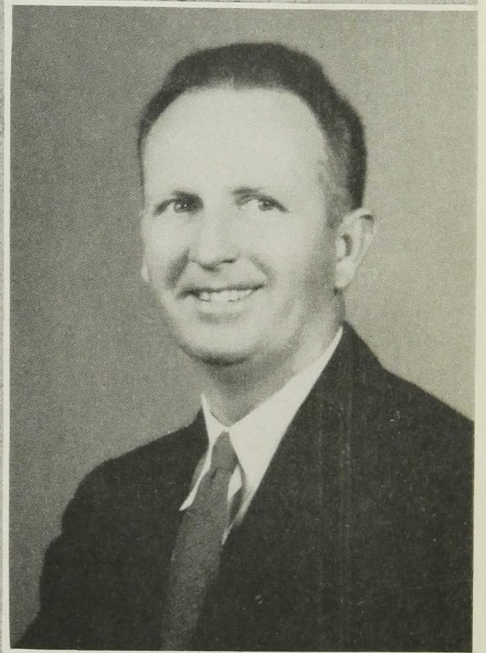
MARGARET P. MARTIN  
(Mrs. Hugh B. Martin)

Physical Education, Audio-Visual  
Education. B. S. - State Teachers  
College, Slippery Rock, Penna.;  
M. A. - University of Pittsburgh,  
Pittsburgh, Penna.



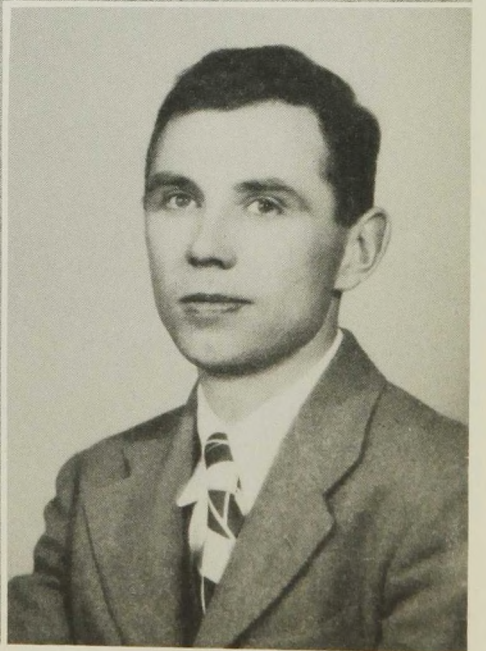
THOMAS S. MENDENHALL

General Science, Chemistry,  
Physiography. B. A. - Marietta  
College, Marietta, Ohio; M. A. -  
Columbia University, New York,  
New York.



PAUL MERRILL

English, Social Studies, Senior  
Class Supervisor. B. S. - North-  
western University, Evanston, Il-  
linois.





W. D. MC WILLIAMS

Physical Education, Varsity Athletic Coach. B. A. - Texas College of Technology, Lubbock, Texas.



JOHN H. PIKUS

Mechanical Drawing, Industrial Arts, Metal and Wood Shop. B. S. - New York State College for Teachers, Buffalo, New York; M. A. - New York University, New York, New York.



MARCIA SMITH

Librarian. B. A. - Madison College, Harrisonburg, Virginia; B. A. L. S. - University of Michigan, Ann Arbor, Michigan.

EDWARD E. SPENCE

English, Social Studies,  
Junior Class Supervisor.  
B. A. - Huron College,  
Huron, South Dakota.



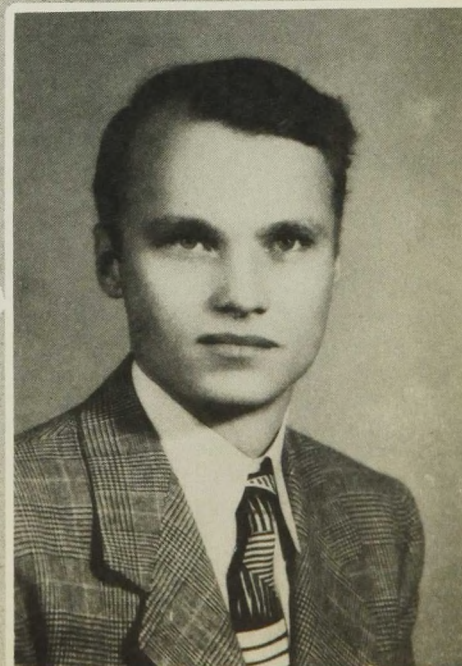
EUNICE S. STEVENSON  
(Mrs. John A. Stevenson)

Home Economics. B. S. H.  
E. - Purdue University, La-  
fayette, Indiana.



JOHN W. WALCOTT

Algebra, General Mathe-  
matics, Geometry, Trigo-  
nometry, B.S. - University  
of Michigan, Ann Arbor,  
Michigan.





LUCILLE C. WINKS  
(Mrs. John O. Winks)

Arts, Crafts, Design. A. B. -  
Bethany College, Lindsborg,  
Kansas; B. P. - Bethany College,  
Lindsborg, Kansas; M. A. - Co-  
lumbia University, New York, New  
York.



OPAL W. WINGFIELD  
(Mrs. Edwin E. Wingfield)

Typing, Shorthand, Bookkeeping.  
B. A. - New Mexico Highlands  
University, Las Vegas, N. M.



JOANNE CONNAL  
Music Department, Piano.

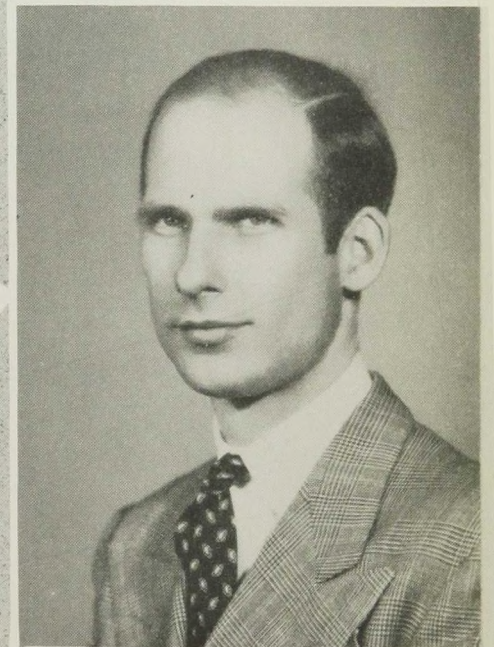
JESSIE MILLER SEIGEL  
(Mrs. Louis Seigel)

Piano. University of Nebraska; B.  
M. - University School of Music,  
Lincoln, Nebraska.



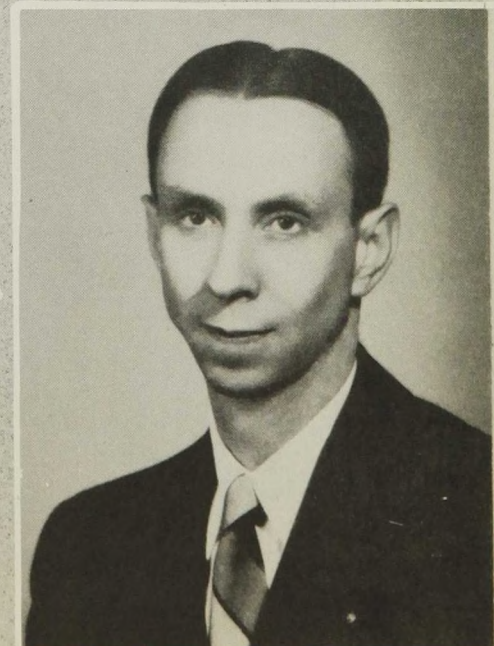
HAROLD B. WEAVER

Stringed Instruments. B. S. - Itha-  
ca College, Ithaca, New York.



JOHN O. WINKS

Instrumental Music, Band,  
Chorus. A. B. - College of Idaho,  
Caldwell, Idaho; B. M. E. - Illi-  
nois Wesleyan University, Bloom-  
ington, Illinois; M. A. - Columbia  
University, New York, New York.



# School Health Service

Dear Students:

The primary purpose of the school nurse is offering you an education in wholesome living. To this end, the school-nursing program has offered you the daily services of your nurse and a thorough physical examination. This examination has included a chest X-Ray, dental check-up and a hearing test on the new audiometer. Many of you have enrolled in Home Nursing classes and the Freshman and Sophomore girls are studying American Red Cross First Aid.

We, of the school-nursing department, trust that you will make periodic physical and dental examinations a habit. Those of you who have a visual, hearing or any other discovered physical defects, should continue to seek proper treatment for these defects.

Guard your health zealously and your chances for success will be improved. Healthful living is successful living.

Sincerely yours,  
MARTHA M. ZUKAS  
School Nurse

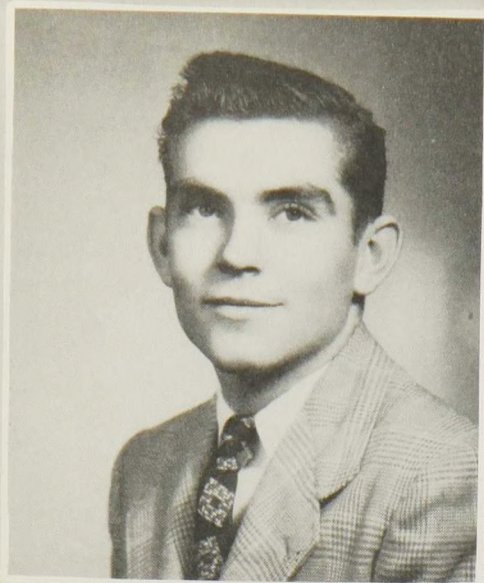


MARTHA M. ZUKAS, R.N.  
(Mrs. Eugene Zukas)

Butler County Memorial Hospital  
Butler, Pennsylvania; Post Graduate  
in Pediatric Nursing, Child-  
ren's Hospital, Pittsburgh, Penna.



**WRO-ZAY**

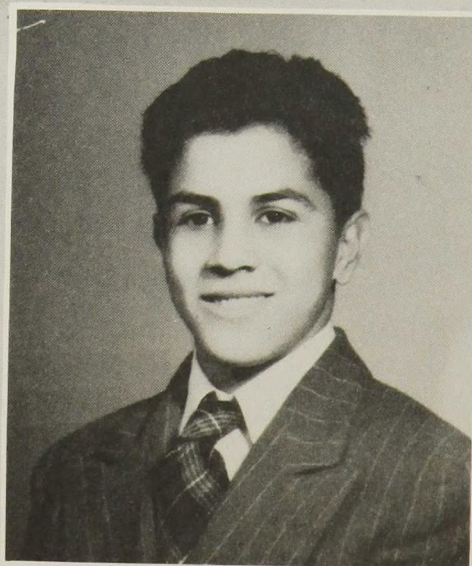


BUREN "Pete" PYBURN  
President

Kileen, Texas; Entered Los Alamos High - September 1947; Varsity Football '45, '46, '47, '48; Varsity Baseball '46, '48; Varsity Track '48; Letterman's Club '48; Tags '48; Senior Scouts; Teen-Town Council. "Hilltop Echo."

JOHN RAEL  
Vice-President

Santa Fe, New Mexico; Entered Los Alamos High - October 1947; Band '46; Junior Play; Varsity Football '48; Chorus '46; Varsity Basketball '48.





PAULINE CLARK  
Secretary

Newport, Rhode Island; Entered Los Alamos High - September 1945; Secretary, Student Council; "Hilltop Echo" - '47; Tags - 45, '46, '47, '48; Rainbow Girls, Worthy Advisor; "La Loma," Activities Editor; Pep Club - '47, '48; Homecoming Queen '48.



NAOMI RAPE  
Treasurer

Oil City, Louisiana; Entered Los Alamos High - September 1948; Cheerleader - '46, '47; Class President - '45, '46; "La Loma" Staff.

PAT HIGHLEYMAN

Concessionaire Treasurer

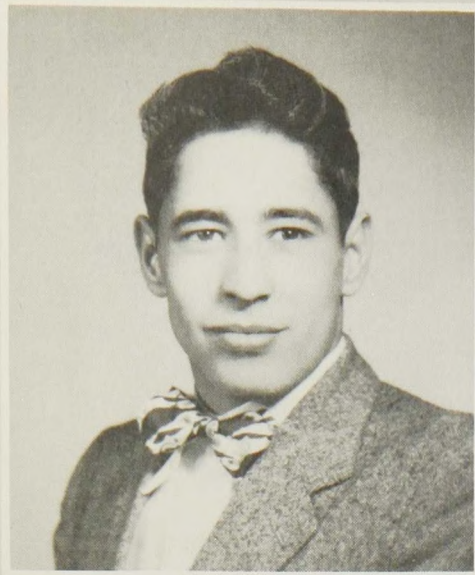
Ogallala, Nebraska; Entered Los Alamos High - September 1946; Band - '45, '46, '47, '48; Chorus - '45; Latin Club '45; "Hilltop Echo" - '47; Pep Club - '46, '47, '48; Rainbow Girls; Student Council, Treasurer; Tags - '45, '46, '47; Junior Play; Secretary Sophomore Class; Girls' State.

JIMMIE MARTINEZ

Sergeant-at-Arms

Santa Fe, New Mexico; Entered Los Alamos High - September 1945; Varsity Football '46, '47, '48; Varsity Basketball - '45, '46, '47, '48; Varsity Track - '46, '47, '48; Varsity Baseball - '47, '48; Chorus; Junior Play; Letterman's Club; Boys' State; Senior Scouts; Student Council - '47; Tags - '45, '46, '47, '48; Teen-Town Council.





**PAT BACA**

Albuquerque, New Mexico; Entered Los Alamos High - September 1945; Varsity Football - '46, '47, '48; Varsity Basketball - '45, '46, '47, '48; Varsity Track - '46, '47, '48; Varsity Baseball - '47, '48; District Tennis Tournament; Letterman's Club; Senior Scouts; Tags - '45, '46, '47, '48; Chorus; Band.

**LUCILLE BADSGARD**

Raton, New Mexico; Entered Los Alamos High - October 1946; Secretary, Freshman Class; G. A. A. - '45, '46; Dramatic Club - '45, '46; Basketball - '45, '46, '47; Tennis Doubles Champion - '47; "Hilltop Echo" - '47, '48; Pep Club - '46; Girls' Ensemble - '47, '48; Tags - '46, '47, '48; Junior Play; Chorus - '45, '46, '47, '48; Christmas Play - '48.



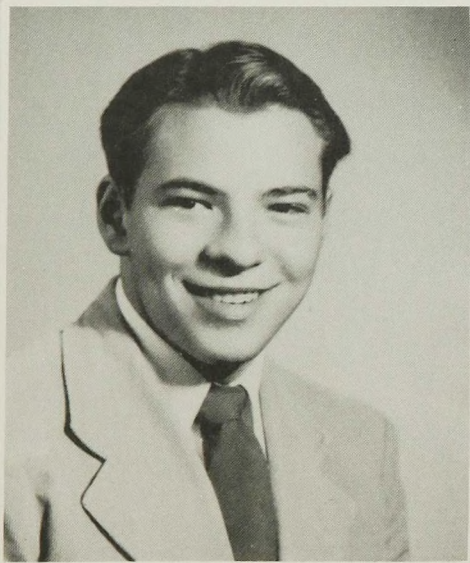
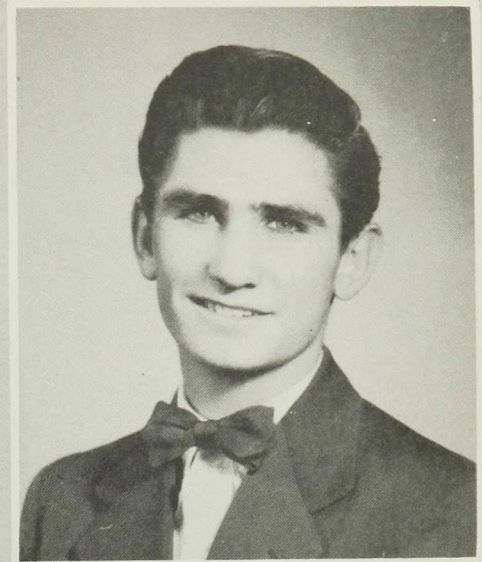
**ANN BROOKS**

Santa Fe, New Mexico; Entered Los Alamos High - September 1945; Student Council, Secretary; Pep Club - '45, '46, '47, '48; President - '48; Teen-Town Council, Secretary-Treasurer Tags - '45, '46, '47, '48; Secretary-Treasurer - '48; Rainbow Girls, Worthy Advisor from September 1948 to January 1949; Concert Band - '45, '46, '47, '48; Christmas Chorus.



WALTER CRANFORD

Santa Fe, New Mexico; Entered Los Alamos High-September 1945; Tags-'45,'46,'47,'48; President-'46; Varsity Football-'46,'47,'48, Captain-'48; Varsity Basketball-'45,'46,'47,'48; Varsity Track-'46,'47,'48; District Tennis Tournament; Letterman's Club, President-'48; "Hilltop Echo"-'48; Student Council-'47.



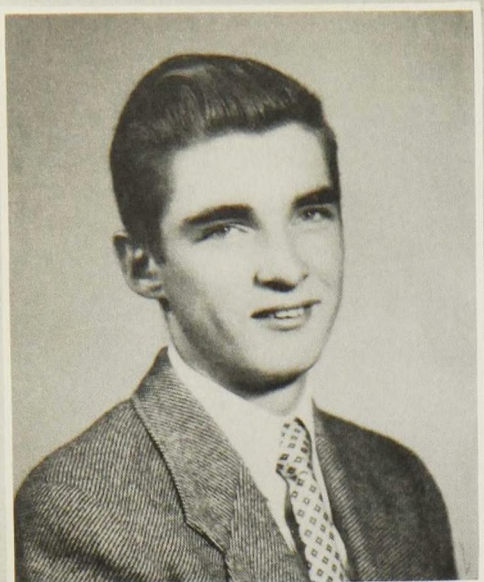
JIM CROW

Norman, Oklahoma; Entered Los Alamos High-September 1948; Student Council-'48; Teen-Town Council.

WANDA FOX

Wichita Falls, Texas; Entered Los Alamos High-September 1948; Girls' Club-'46,'47; Commercial Club-'47; Writer's Club-'47; Pep Club-'48; "Hilltop Echo"; Senior Tags-'48; Acapella Choir-'47,'48; "La Loma" - Art Editor; Rainbow Girls; Band-'46,'47,'48.





BILL FOX

Santa Fe, New Mexico; Entered Los Alamos High- September 1945; Teen-Town Council; Boys' State; Class President - '45, '46, '47; Junior Play; Varsity Football - '46, '47; Varsity Basketball - '45, '46, '47; '48; District Tennis Tournament; Letterman's Club; Tags - '45, '46; State Goff Meet - '47.

KAY FROMAN

Band '47-'49; Pep Club '47-'48; Orchestra '48-'49; Journalism '48-'49; Girls Basketball '48-'49.



JOAN GILLESPIE

Littlefield, Texas; Entered Los Alamos High-September 1945; Pep Club - '45, '46, '47, '48; Tags - '45, '46, '47, '48; Class Basketball - '46, '47.



JO ANNE GRIFFIN

Austin, Texas; Entered Los Alamos High - March 1948; Drama Club '45, '46; Girl Reserves '45, '46; Student Council '45, '46, '47, '48; Secretary '45, '46; Latin Club '46, '47; Minoan Literary Society '46, '47, '48; Class Basketball '46, '47; Class Baseball '46, '47; Pep Club '48, Treasurer '48; Tags '48; Dramatics '48; "La Loma" Business Manager.

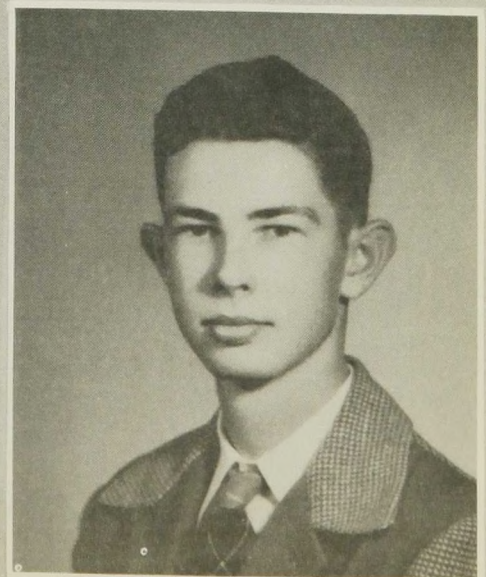


JERRY HAEFFNER

Houston, Texas; Entered Los Alamos High - January 1948; Tags '48; Pep Club '48; Chorus '48; "Hilltop Echo" '48; Bowling Club '47; Class Basketball '46, '47; Hi-Y Club '47; Rainbow Girls, Associate Worthy Advisor.

TOM HAMBLET

Santa Fe, New Mexico; Entered Los Alamos High - September 1948; Varsity Football '45, '46; Football Manager '48; "Hilltop Echo" '48.



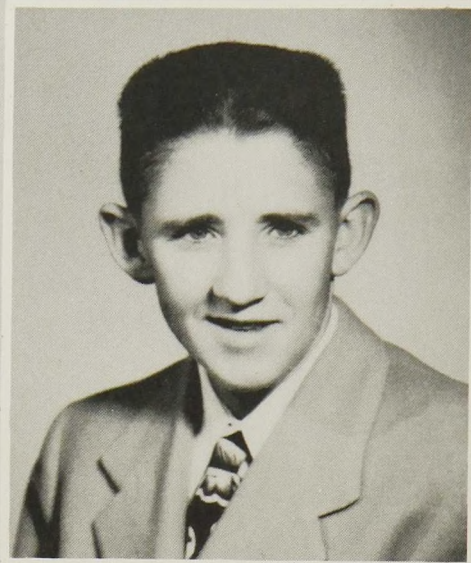


**MARGARET IRWIN**

Douglas, Arizona; Entered Los Alamos High-December 1947; Band-'45, '46, '47, '48; Metranone Club-'46, '47; Majorette-'45, '46, '47; Twirlers' Club-'45, '46; Spanish Club-'45, '46, '47; Tennis-'46, '47; Table Tennis Champion-'45, '46; Student Council-'46, '47.

**JERRY JARMAN**

Lubbock, Texas; Entered Los Alamos High-September 1946; Varsity Football-'48; Varsity Basketball-'48; Varsity Baseball-'48; Senior Scouts; Junior Rifle Club President -'48; "Hilltop Echo"-'48.



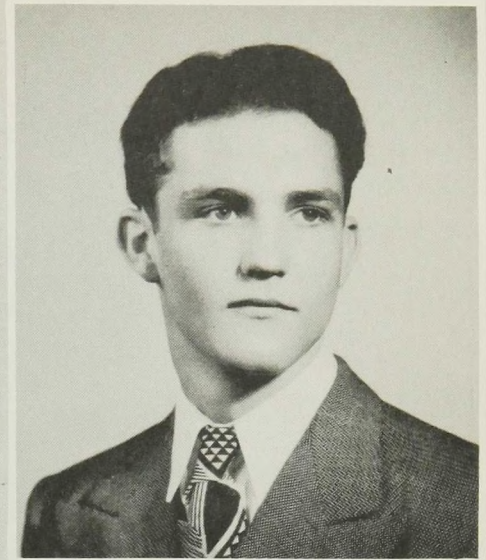
**MARLENE KARINEN**

Vancouver, Washington; Entered Los Alamos High-September 1948; Student Council, Secretary-'48; Class Activity Manager-'46, '47; Glee Club-'46, '47, '48; Student Council, President-'47; "La Loma," Editor.



GORDON LANE

Raton, New Mexico; Entered Los Alamos High-September 1945; Student Council-'46, '47, '48, President-'48; President, Freshman Class; Announcer, School Radio Programs.



MARY LARKINS

St. Charles, Missouri; Entered Los Alamos High-September 1948; Spanish Club-'46, '47, '48; Pep Club-'46, '47, '48; Band-'45, '46; Camera Club-'47, '48.

MARJORIE LITTLE

Lamar, Colorado; Entered Los Alamos High-September 1947; Pep Club-'46, '47, '48; Chorus-'46.





**CONNIE MAESTAS**

Lindrith, New Mexico; Entered Los Alamos High - September 1948; Pep Club '46,'47; Junior Play; Commercial '46,'47; Espanola Junior Queen.

**HELEN MAESTAS**

Salida, Colorado; Entered Los Alamos High - September 1947; Home Economics Club '45,'46,'47; G. A. A. '45,'46,'47; Junior Class Secretary; Pep Club '47,'48; Teen-Town Council; Tags '47,'48; Dramatics '47,'48; Chorus '48.



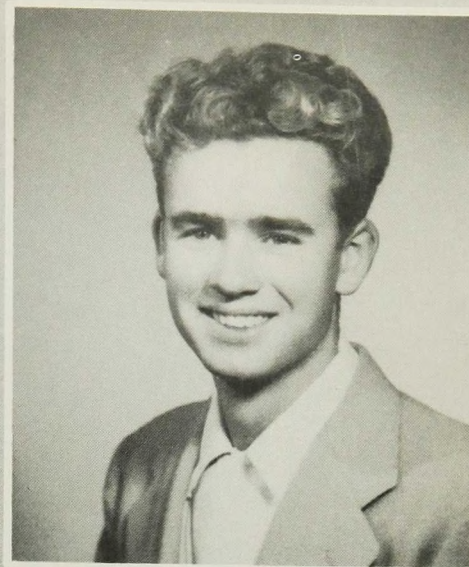
**CATHERINE MAYO**

Britton, Oklahoma; Entered Los Alamos High - October 1948; Chorus '46,'47,'48; "Britton Flash" '48; Cubette Pep Club '46,'47,'48; Safety Council '48; President Sophomore Class; Tri-State Chorus '47,'48; Tags '48; "La Loma" Staff.



BRUCE MERRITT

Albuquerque, New Mexico; Not Graduating.



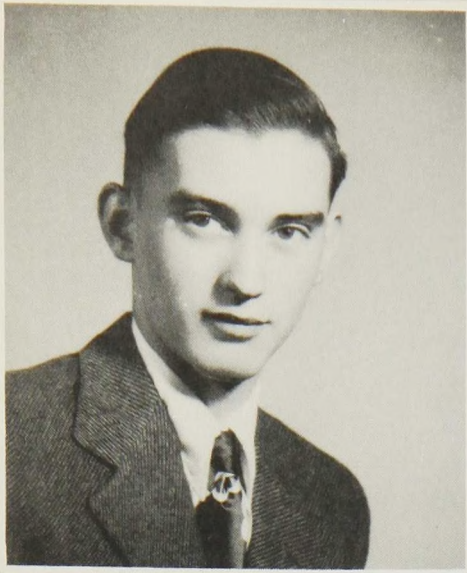
DAN NELIS

Golden, Colorado; Entered Los Alamos High September 1945.

ROSEMARY NOLAN

Chicago, Illinois; Entered Los Alamos High-September 1945; Pep Club-'46, '47, '48; Tags - '45, '46, '47, '48; "Hilltop Echo" - '45, '46; Girl Scouts, President-'45, '46; Chorus-'47; Basketball-'47; Teen-Town Council, District Attorney-'48.





DALE OESTERLE

Caro, Michigan; Entered Los Alamos High-September 1948.

SALLY RADEBAUGH

Denison, Texas; Entered Los Alamos High-January 1948; Scholarship Club -'45, '46, '47, '48; Latin Club-'45, '46, '47, '48; Girl Reserves-'45, '46, '47, '48; Tags-'48, Vice President-Treasurer-'48; Pep Club-'48; Rainbow Girls; Chorus '48; Teen-Town Council; "La Loma" Staff.



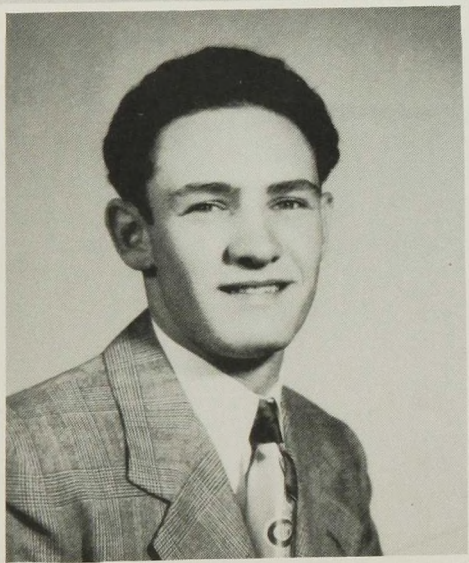
COLLEEN RITCHEY

Albuquerque, New Mexico; Entered Los Alamos High-September 1947; Pep Club-'47, '48; Tags-'47; Student Council, Secretary-'47.



LOUISE RONVEAUX

Rock Island, Illinois; Entered Los Alamos High-September 1948; Camera Club-'46, '47; Home Economics Club-'47; Girl Reserves-'45, '46; Vice President-'45, '46; Tags-'48; Chorus-'48; Teen-Town Council.



LEON ROSS

Portland, Oregon; Entered Los Alamos High-1946; Tags-'46, '47, '48; Senior Scouts; Letterman's Club; Varsity Track-'46, '47; Varsity Football-'46, '47, '48.

HELEN WATROUS

Tallahassee, Florida; Entered Los Alamos High-September 1948; Band-'46; Glee Club-'46, '47, '48; School News Staff-'46; Spanish Club-'47; "Hilltop Echo"; "La Loma" Staff.



# Class of '49

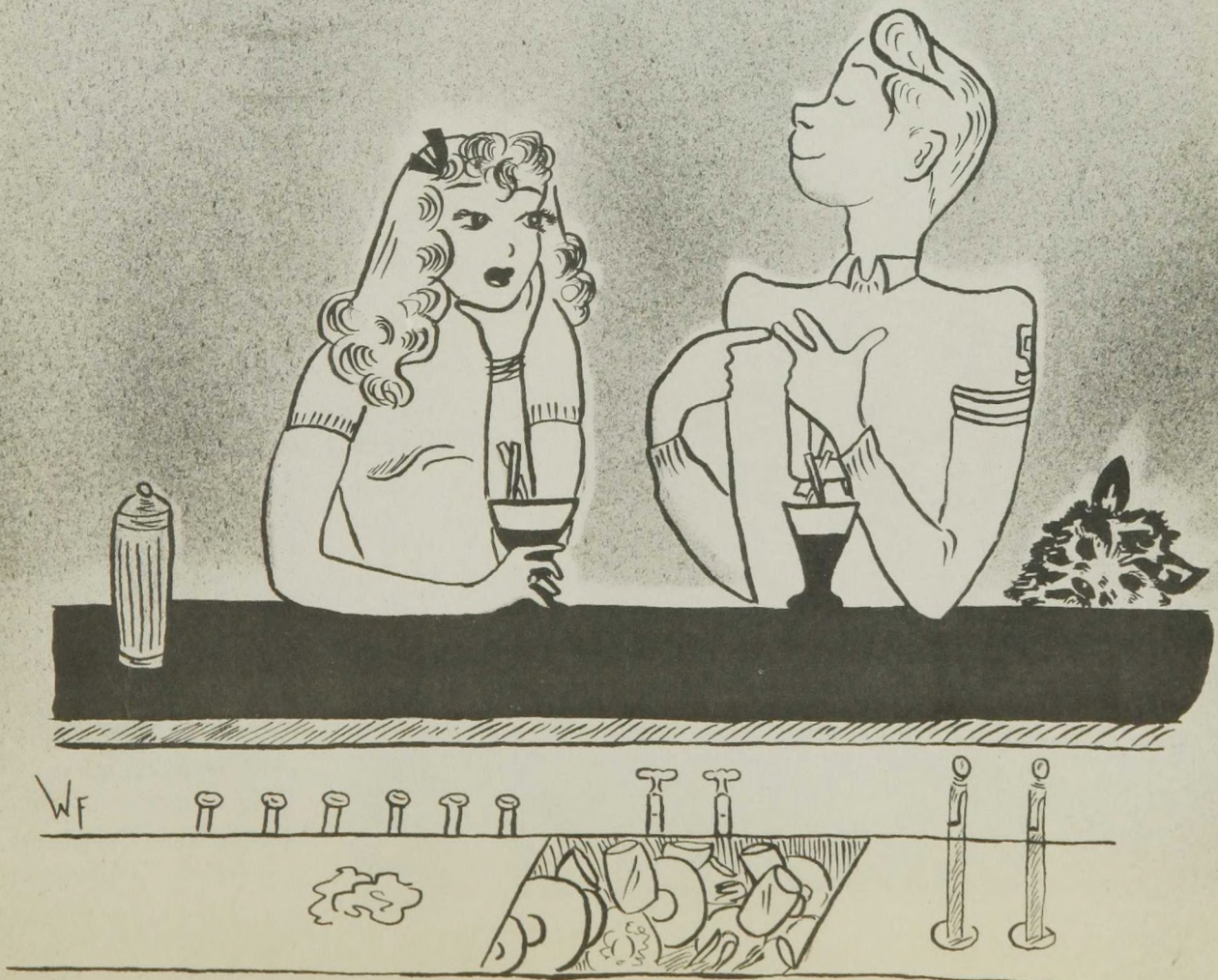
CLASS MOTTO: Be sure you are right, then go ahead. The worst is past.

CLASS FLOWER: White Orchid

CLASS COLORS: Green and White



# JUNIORS



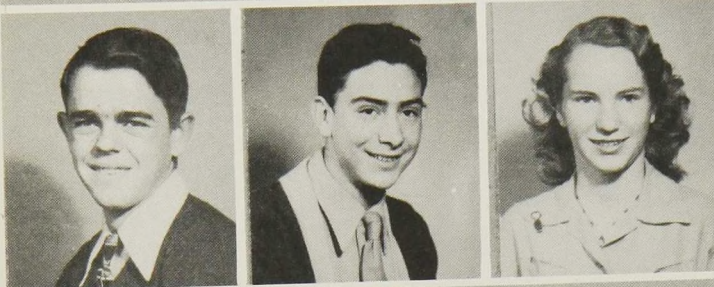
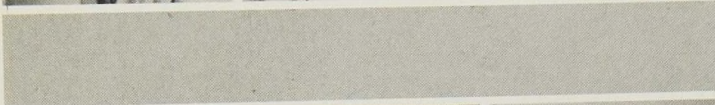
# Juniors



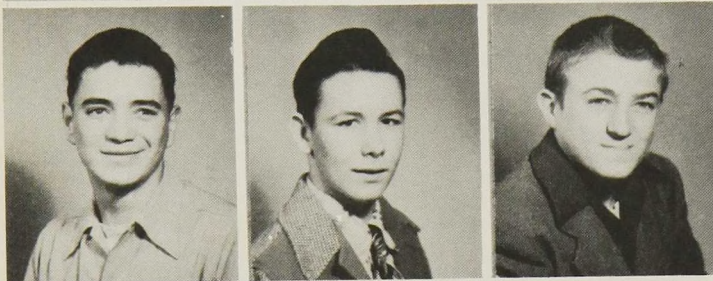
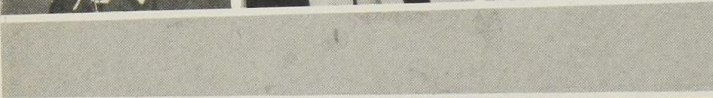
Marjorie Abbott  
Lon Alexander  
Patty Berry  
Jacklyn Billings



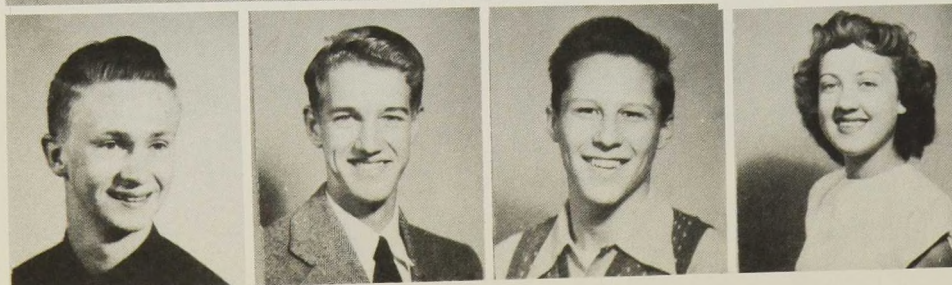
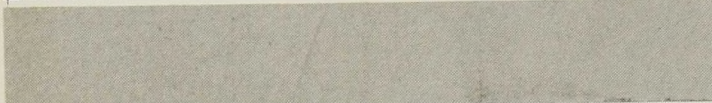
James Billings  
Mary Donathan  
Bill Doyle



Bob Evans  
Walter Garcia  
Marilyn Gates



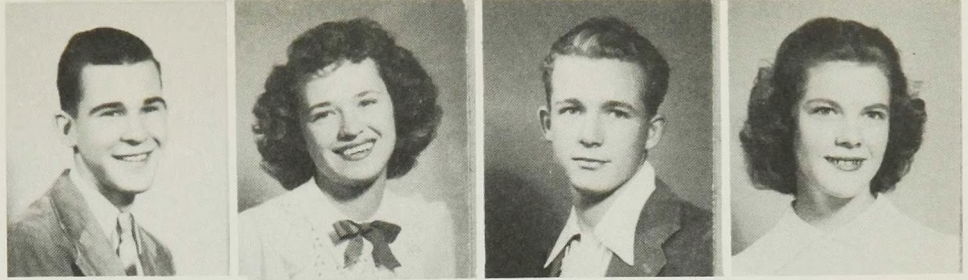
Walter Gonzales  
Winfred Headdy  
Darrell Hohner



Charles Jakobiak  
William Junge  
Ted Jenson  
Mary Lou Jonnard

# Juniors

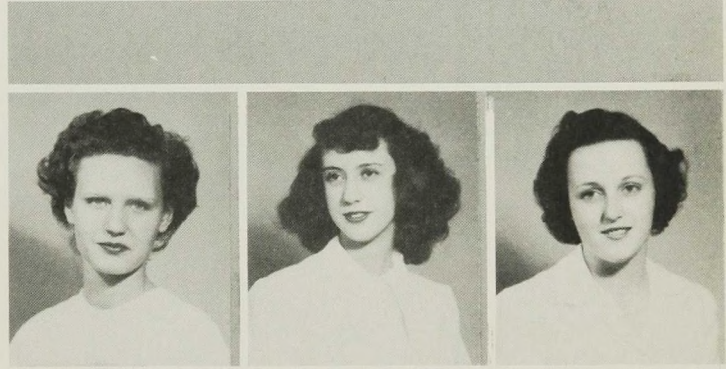
Eddie La Combe  
Ann McClelland  
Grady McKinley  
Jimmie Lea McMillan



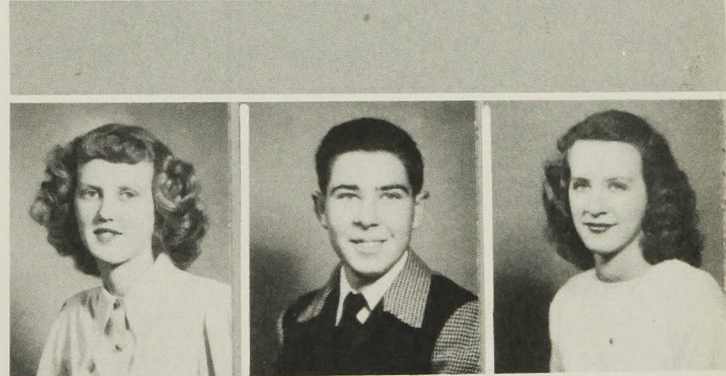
Bill McWilliams  
Fred Minshall  
Vera Ruth Montgomery



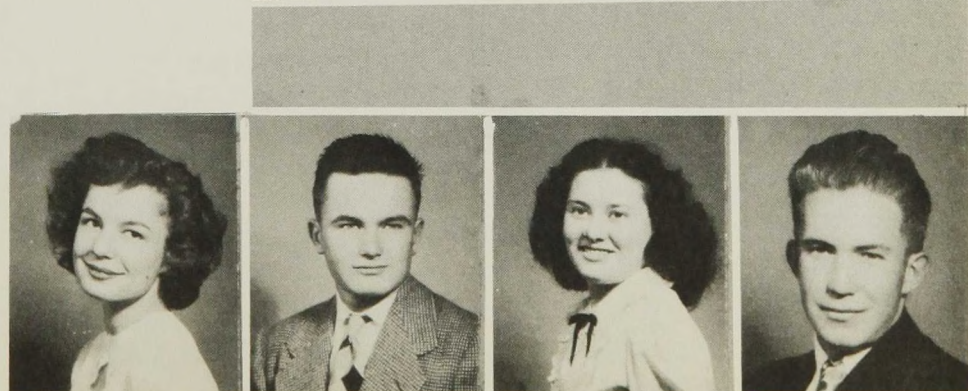
Wanda Morris  
Nancy Neal  
Janet Nendell



Cynthia Ogren  
William Pyburn  
Erma Reynolds



Bobbie Sue Ritchey  
Alan Robinson  
Virginia Romo  
Leslie Schofield



# *Juniors*



Jean Stern  
Gloria Trujillo  
Barbara Tucker



Drummond Wheeler  
Myrtice Wilson  
Mary Helen Worthington

## OTHER MEMBERS OF THE JUNIOR CLASS

Jack Arrison  
Betty Moore

Bryan Watson

Carmen Pulliam  
Frances Struck

# *Junior Class Officers*

President

BRYAN WATSON  
Clarimore, Oklahoma

Vice President

DARRELL HOHNER  
Great Bend, Kansas

Secretary

JIMMY LEA MC MILLAN  
Bartlett, Texas

# NOPIEN



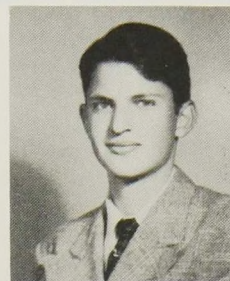
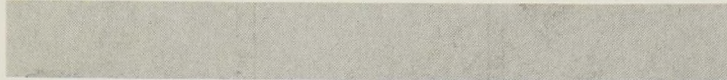
# Sophomores



Dale Allen  
Rupe Baca  
Phyllis Ballow  
Joan Carroll



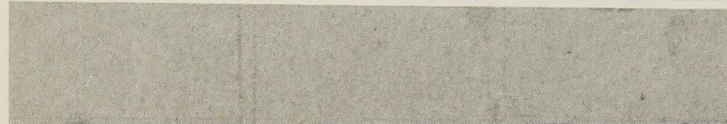
Jimmy Cheek  
Beverly Christopher  
Joan Dell Di Luzio



Esther Fernandez  
Irene Fulgenzi  
Neil Goldbold



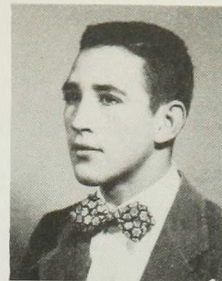
Bobbie Harelson  
Ruth Irwin  
Carol Keith



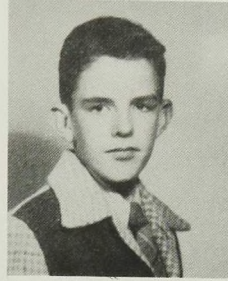
Carrie Sue Kerr  
Norma Lacy  
George Linton  
Bernice Little

# Sophomores

Leo Maes  
Berlen Martinez  
Robert Martinez  
Corinne Milligan



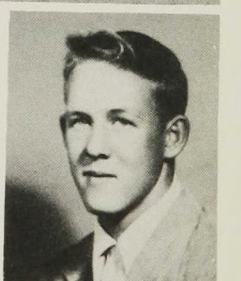
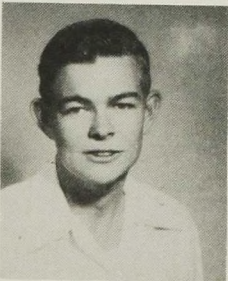
Lloyd Mitchell  
Jean Murray  
Joan Nash



Darlene Ogren  
Gracie Olivas  
Celia Serrano

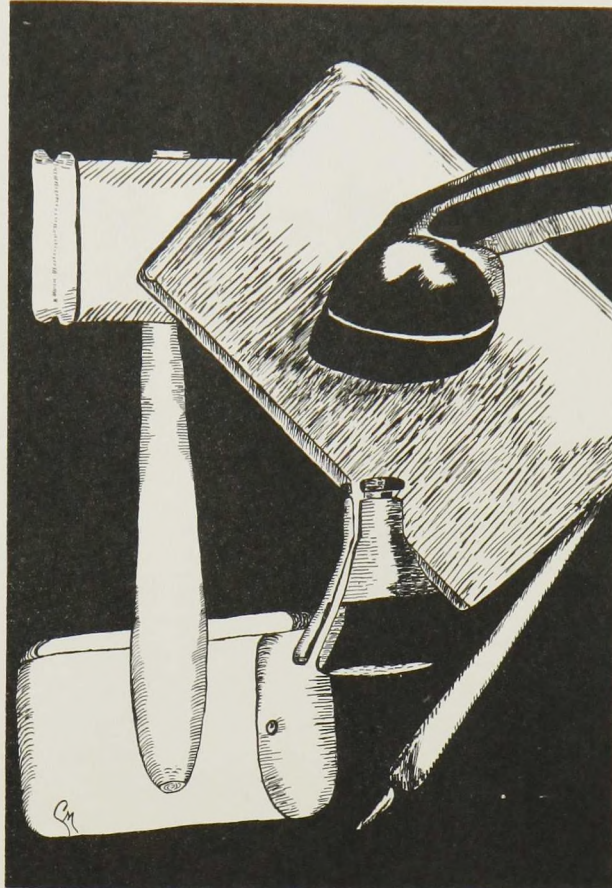


Charles Shane  
Dorothy Thornton  
Jack Tucker



Marihelen Williamsor  
Joanna White  
Robert Winks  
Joyce Stewart





## *Sophomore Officers*

President

NEIL GODBOLD, Austin, Texas

Vice President

JERRY RICH, Amarilla, Texas

Secretary - Treasurer

TED BURTONSHAW, A. L. Cuesta, Florida

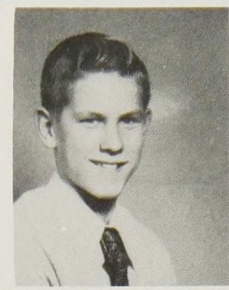


**GREENGLASS**

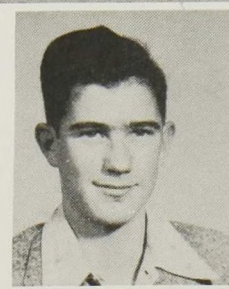
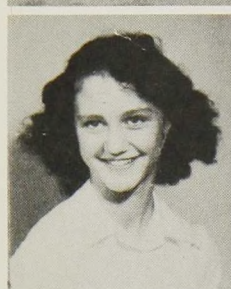
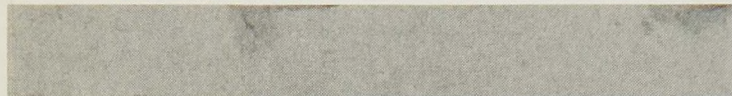
# Freshmen



Lucy Alvidres  
Frances Armstead  
Barry Barthell  
La Verne Bell



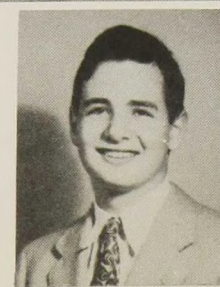
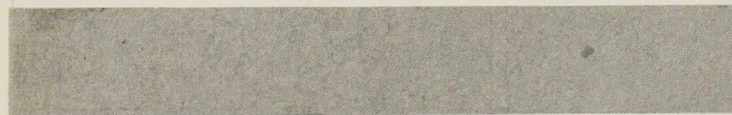
Euel Breeze  
Joan Bryan  
Robert Burtenshaw



Jane Campbell  
Joan Darrell  
Jack Dubberly



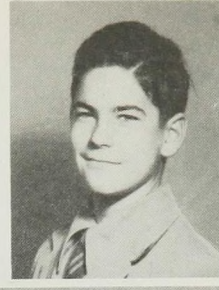
Laurencita Gonzales  
Sandra Goodson  
Dixie Gravitt



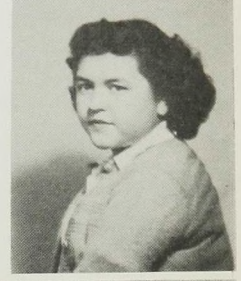
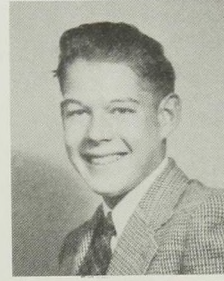
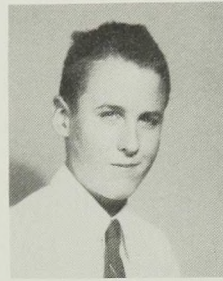
Robert Hamblet  
Victor Heyman  
Barbara Hillhouse  
Grover Hines

# Freshmen

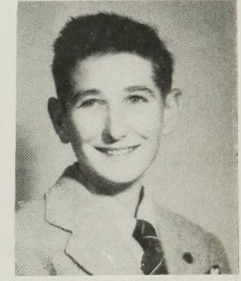
Ramon Hoff  
 Shirley Jean Hoff  
 Joseph Jenike  
 Alric Johnson



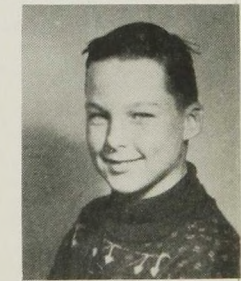
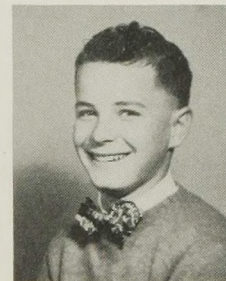
Philip Kimball  
 John Looze  
 Pauline Lujan



Kenneth McCleskey  
 Lawrence Manker  
 Harry Miller

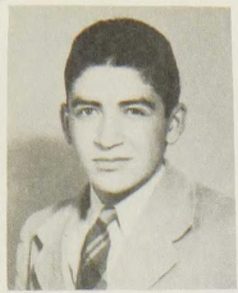


James Murray  
 Pat Nendell  
 Richard Newbury



Barbara Raitt  
 Kathleen Reamy  
 Joan Redmon  
 Polly Richardson

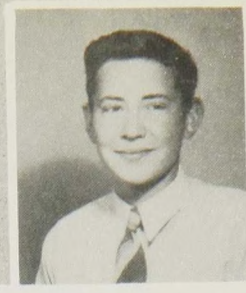




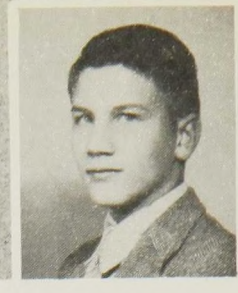
Secundino  
Sandoval



Frances  
Smith



Bruce  
Stahl



James  
Wearin



Dolores  
Webb



Vivian  
Wentz



Bob  
Wheeler



Marlene  
Williams



Barbara  
Winks



Marguerite  
Woodwell



Harold  
Wagner

## *Freshman Officers*

President.	. Jack Dubberly.	. Las Vegas, N. M.
Vice President.	Dolores Webb.	. Waco, Texas
Secretary.	. La Verne Bell.	. Leed, South Dakota
Treasurer	. Victor Heyman	. Washington, D. C.

Freshmen whose pictures do not appear.  
 Euel Breeze, Dan Dayhoff, Jackie Garcia, Ronald  
 Grow, Bill Harelson, Walter Lemly, Margie Olivas,  
 John Trujillo, Grady Watson.



# ORGANIZATIONS

# Student Council



STANDING: Grady McKinley, Bob Burtenshaw, Bill McWilliams, Jean Stern. SEATED: Gordon Lane, Ruth Irwin, Frances Smith, Pat Highleyman, Jim Crow, Pauline Clark, Jo Anne Griffin.

## OUR IDEALS

A perfect democracy is ours; it is our conception of Utopia. Just as the Wiseman of long ago were led by the Star to the place where the Savior lay, the democratic idea has, for three centuries since the landing of the first colonists, been the guiding torch through this world of tears, trouble and turmoil. Today we appreciate even more this beacon which serves our nation, lighting a way through tumultuous seas of governments. Without such ideals as ours, possibly this book might not have been published.

We, the students of Los Alamos High School have our ideals - our star to guide us through to perfect living and consequently, to a more perfect democracy. The Student Council exemplifies a portion of this ideal, but it is the individual student who must represent the standard of perfection which this high school desires to attain. In him rests the duty of desiring and obtaining this "Summum Bonum."

# Teen Town Council



STANDING: Bosco Hohner, Jimmy Martinez, Pete Watson, Jean Stern, Gordon Lane, Dan Nelis, Jackie Reed. SEATED: Margie Abbott, Mary Donathan, Ann McClelland, Jimmie Lea McMillan, Sally Radebaugh, Dolores Webb, Louise Ronveaux. Not in picture: Ann Brooks, Polly Clark, Rosemary Nolan, Grady McKinley, Pete Pyburn, and Donald Wells.

The Teen Town Council was organized on October 25, 1948. The following members from a Board of Directors, which govern the functions of the Youth Center and determine policies and decisions concerning actions of Teen Town.

Mayor . . . . .	Pete Watson
Vice Mayor . . . . .	Grady McKinley
Sec. - Treas. . . . .	Ann Brooks
Prosecuting Attorney . . . . .	Rosemary Nolan

# La Loma Staff



Polly Clark, Jimmie Lea McMillan, Ann Brooks, Marlen Karinen, Jo Anne Griffin, Wanda Fox.



STANDING: Grady McKinley, George Linton, Pete Watson, SEATED: Dale Allen, Jackie Billings, Sally Radebaugh, Catherine Mayo, Phyllis Ballow, Helen Watrous, Charles Jakobiak.

# Journalism Class



STANDING: Jerry Haeffner, Mr. Edward Spence, Sponsor. SEATED: Charles Jakobiak, Ann McClelland, Tom Hamblet, Charlie Shane, Jerry Jarman, Pete Pyburn, Patty Berry, Nancy Neal.

The Journalism class was organized under the leadership of Mr. Edward Spence and assumed its duties of publishers of the school paper about six weeks after the beginning of school. The class was limited in size since there was but one period allocated for Journalism. The school paper, "The Hilltop Echo," is published once every two weeks and contains news items concerning activities of students in the junior and senior high school. The editorship of the paper is changed every two issues so that each student assumes the duties of the editor throughout the school year.

## LA LOMA STAFF

Editor-in-Chief . . . . Marlene Karinen  
 Assistant Editor . . . . Jimmie Lea McMillan  
 Business Manager . . . . Jo Anne Griffin  
 Circulation Manager . . . . Geroge Linton  
 Advertising Manager . . . Charles Jakobiak  
 Sports Editor . . . . . Walter Cranford

## STAFF

Jackie Billings	Sally Radebaugh	Pete Watson
Grady McKinley	Wanda Fox	Dale Reed
Phyllis Ballow	Catherine Mayo	Helen Watrous
		Ann Brooks

The annual staff was elected this year by the student body. This is the first time that the students have been in charge of all features of the annual, including all financial responsibilities. The staff has been greatly handicapped by the lack of adequate facilities with which to compose the annual, but they have gained experience which should help to make next year's annual bigger and better.

# School Chorus



TOP ROW: Ruth Irwin, Norma Jean Lacy, Dixie Gravitt, Secondino Sandoval, Jerry Simmons, Bob Winks, Jimmy Billings, Sally Radebaugh, Ann McClelland, Jerry Haeffner. MIDDLE ROW: Joan Bryan, Catherine Mayo, Vivian Wentz, Pat Baca, Jimmy Martinez, Jim Murray, Helen Maestas, Louise Ronveaux, Mary Larkin, Mary Lou Jonnard. BOTTOM ROW: Rheba Clearman, Pat Nendell, Marguerite Woodwell, Celia Serano, Frances Armstead, Gloria Gould, Bobbie Harleson, Patty Berry, Dorothy Thornton, Dolores Webb.

The Los Alamos High School Chorus was established in the fall of 1946. They meet with Mr. John O. Winks, sponsor and instructor, three times weekly. Their major program is the Christmas program and they carol throughout the city during the holidays. The Chorus is planning a spring concert and many radio programs over our local station.

# School Band



Cornets. . . . . Bob Johnstone, Secundino Sandoval,  
 Dick Worthington, Dick Criss, Bob Burtenshaw.  
 French Horns . . . . . Bob Bergstresser, Floyd Mitchell  
 Baritones . . . . . Bob Winks, Robert Wheeler  
 Trombones . . . . . Joe Smith, Drummond Wheeler  
 Bass. . . . . Walter Cranford  
 Drums . . . . . Dan Nelis  
 Baritone Saxophone . . . . . Gordon Lane  
 Tenor Saxophones . . . . . Ann Brooks, Alric Johnson  
 Alto Saxophones. . . . . Jerry Simmons, Cherie Chase  
 Flutes . . . Pat Highleyman, Susan Brooks, Lucy Alvidres  
 Clarinets - first . . . Margaret Irwin, Edward La Combe,  
 Jimmy Johnstone, La Verne Bell.  
 Clarinets - second. . . . . Jean Stern, Robert Hamblet,  
 Betty Jo Austin, Jana Haley  
 Clarinets - third . . . Marihelen Williamson, Karen Peterson,  
 Clara Sandoval, Marguerite Woodwell

The school band, which was organized in 1947, now has approximately 40 members. They keep very busy playing for various activities - Sunday afternoon concerts, concerts on Radio Station KRSN and at the opening of various community clubs and centers.

# Drama Class



Jimmy Murray, Connie Maestas, Wanda Fox, Grady McKinley, Dramatizing a play over radio station KRSN.



Kathleen Reamy, Frances Armstead, Jean Murray, Bill Fox, Vivian Wentz, Round-table discussion broadcast.

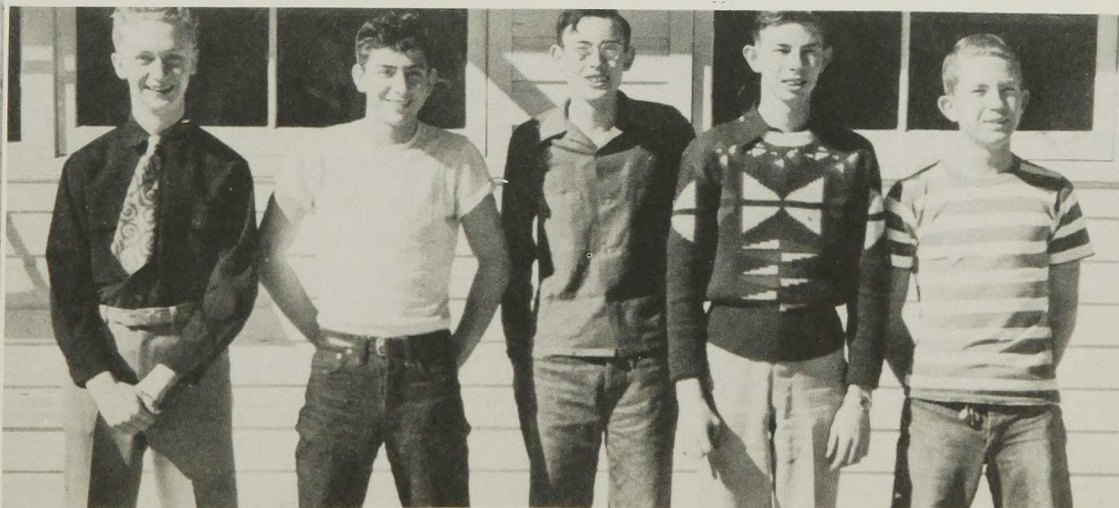
The Drama Class of 1948-49 has fulfilled many of the expectations of the student body. The class has presented four skits for National Education Week; a Christmas play entitled "Jiminy Christmas" and many, many radio presentations. Other members of the Drama Class not pictured above are Beverly Christopher, Lucille Badsgard, and Margie Abbott.

## Senior Scouts



TOP ROW: Jerry Simmons, Pete Watson, Rex Harrison, Jerry Jarman, Dennis Junge. MIDDLE ROW: Ted Burtenshaw, John Rael, Jerry Cole, Jean Stern, Victor Gonzales, Bobby Martinez. BOTTOM ROW: Bosco Hohner, Jimmie Martinez, Pat Baca, Kenneth McClesky, Lon Alexander. OFFICERS: Guide - Pete Watson, Assistant Guide - Bosco Hohner, Scribe - Ted Burtenshaw.

## Civil Air Patrol



Charles Jakobiak, Walter Garcia, Fred Menshall, Tom Hamblet, Bill McWilliams. The Civil Air Patrol is a volunteer organization of both boys and girls interested in aircraft. The organization is subdivided into Cadets, whose age level is from fifteen to eighteen, and the Senior Members, who must be over eighteen years of age. While the true function of the C. A. P. is to prepare its members for military service, it also instructs in airplane operation, construction, maneuvers, Link Training and model airplane construction.

## Rainbow Girls'



TOP ROW: Barbara Hillhouse, Polly Richardson, Kathleen Reamy, Susan Brooks, Marihelen Williamson, Marilyn Bowen, Pat Highleyman, Jimmie Lea McMillan, Shirley Hoff, Patsy Jones, Betty Jo Austin. MIDDLE ROW: Mrs. Dean Manker - Mother Advisor, Joan Bryan, Meredith Taylor, Frances Armstead, Sandra Goodson, Frances Smith, Wanda Fox, Bobbie Harelson, Erlene Seay, Dolores Webb, Dale Allen, Joan Darrell, Margie Abbott. BOTTOM ROW: Mary Donathan, Charlotte McDaniel, Sally Radebaugh, Jerry Haeffner, Polly Clark, Ann Brooks, Betty Armstead, Wanda Thomas.

The Rainbow Girls became activated at Los Alamos in March 1948, under the direction of the Santa Fe Rainbow Assembly and Mr. Gerald Hoff, from the Los Alamos Masonic Lodge. Mrs. Wimuth Carman was the Mother Advisor for the first year and Mrs. Dean Manker is now serving in that capacity. Worthy Advisors of the association have been Wanda June Thomas, Betty Armstead, Ann Brooks and Polly Clark.



# PERSONALITIES

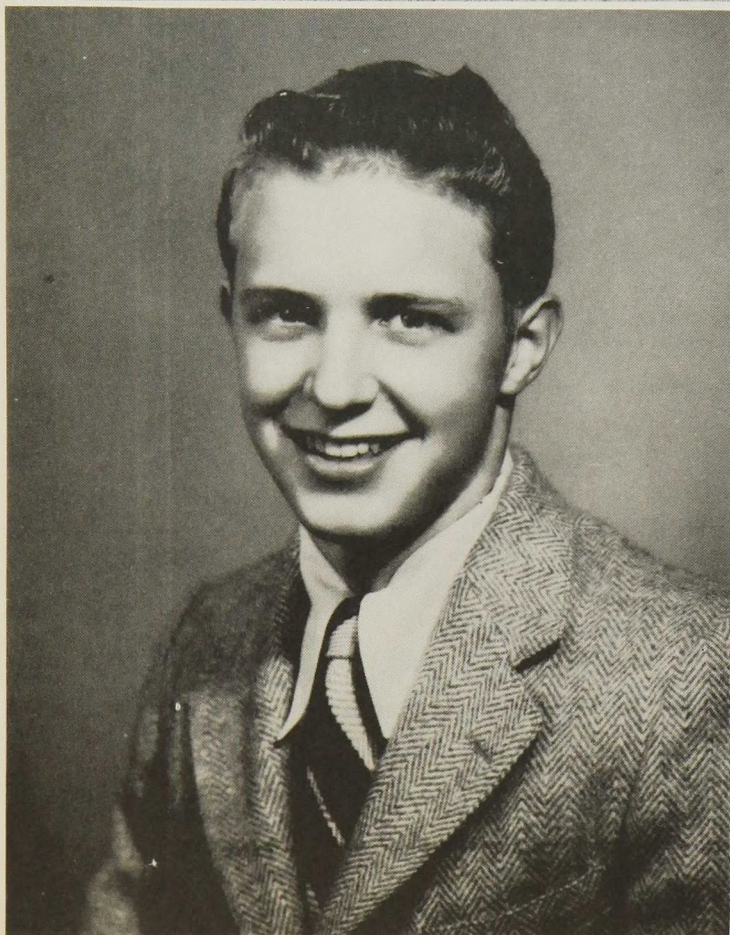
HIGH SCHOOL LIBRARY  
LOS ALAMOS, NEW MEXICO



*School*

MOST BEAUTIFUL GIRL

Marlene Karinen



MOST HANDSOME BOY

John Wells

## *Favorites*



### CUTEST COUPLE

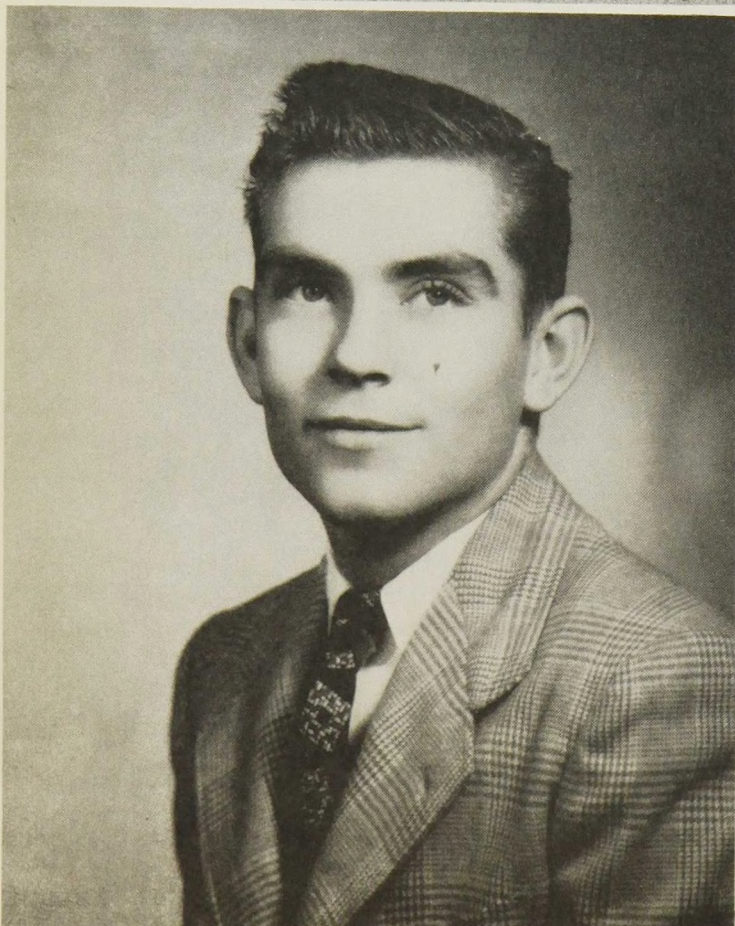
Ann Brooks and Pete Watson

Voting for the school favorites was sponsored by La Loma staff. Each class nominated one boy and one girl to represent their class in the balloting. Those, whose pictures appear on these two pages, were elected by the entire student body.



## *Senior*

On the following pages are portraits of the most popular students in each class as chosen by their classmates.



FAVORITE GIRL  
Pauline Clark

FAVORITE BOY  
Pete Pyburn

## *Favorites*

After the ballots were counted, these proved to be the favorites.



**MOST LIKELY TO SUCCEED**  
Rosemary Nolan and Gordon Lane



**MOST PERSONABLE**  
Marlene Karinen and Jimmy Martinez



**BEST ALL AROUND BOY AND GIRL**  
Jo Anne Griffin and Walter Cranford



MOST INTELLIGENT  
Sally Radebaugh and Bill Fox



MOST AMBITIOUS  
Jo Anne Griffin and Jim Crow

*Junior  
Favorites*



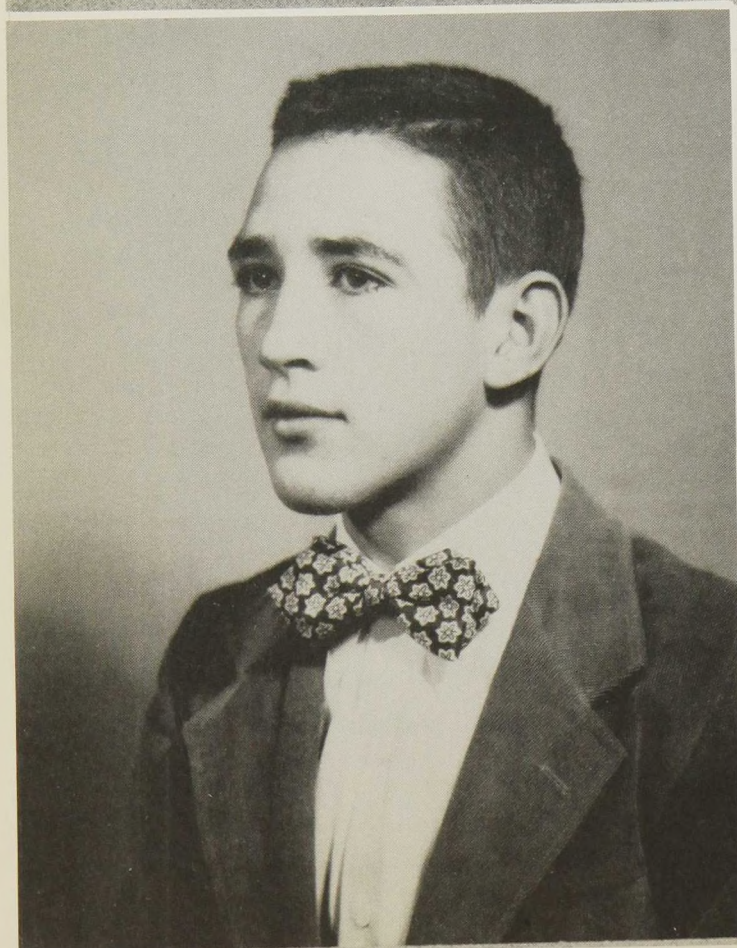
Jimie Lea McMillin

Pete Watson





*Sophomore  
Favorites*



Phyllis Ballow

Bobby Martinez

*Freshman  
Favorites*

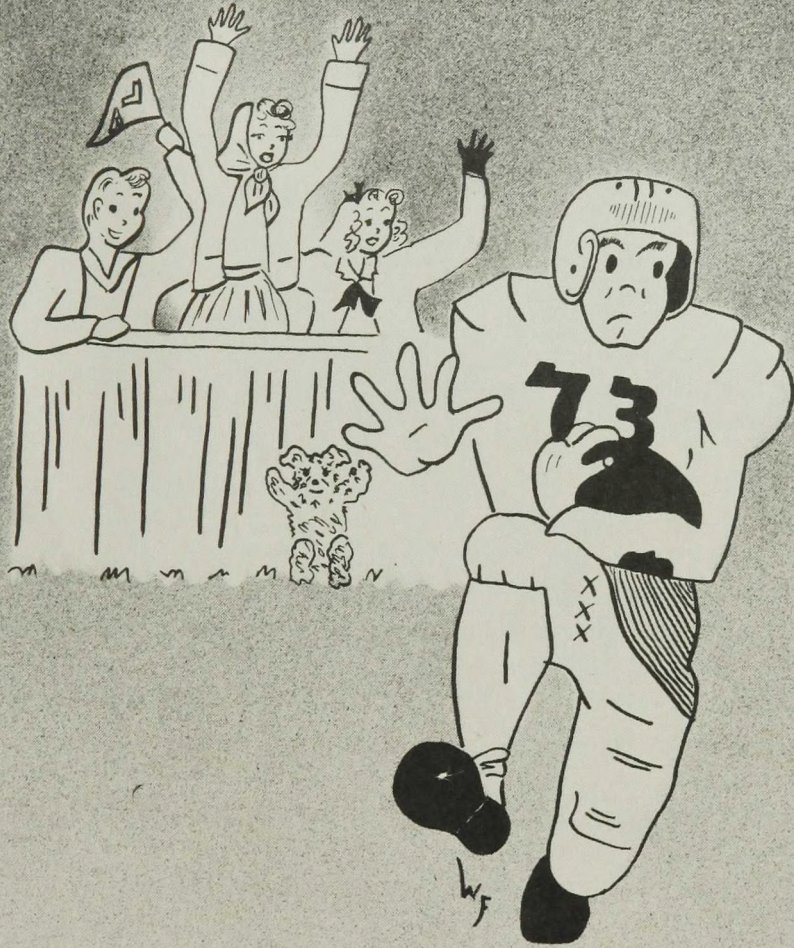


Sandra Goodson  
La Verne Bell



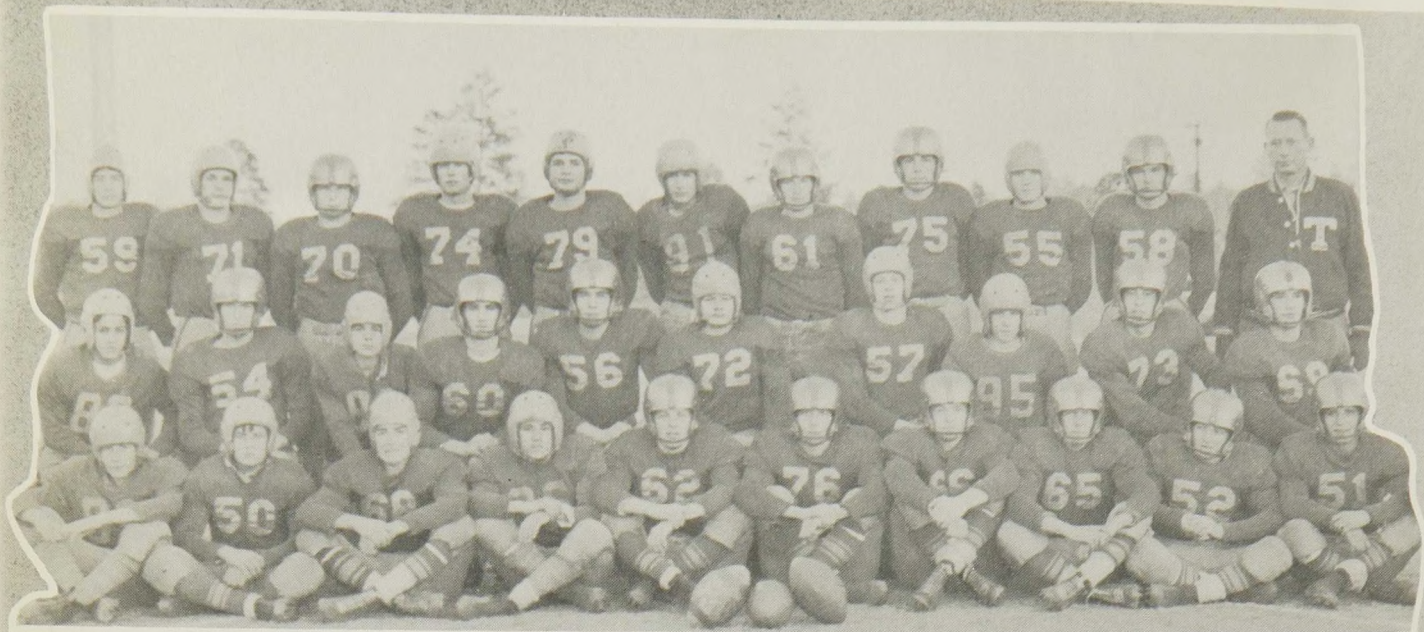


1. Pretty as a picture. 2. VanHeflin type - 3. Yeah, studios. 4. Such goes on!! 5. Rip Ram. 6. Lone Somebody. 7. Anybody wanta take her to raise??? 8. Nice sweater. 9. Idle thoughts: "Which one is Polly?" 10. Take your pick, girls. 11. What twenty million want!!! 12. What a contortionist!!! 13. We are the girls from the Institute. 14. Camera shy??? 15. Cute kids. 16. Nic - eece!!!! 17. School daze. 18. 19. Oh, Frankie! or is that Bobby??

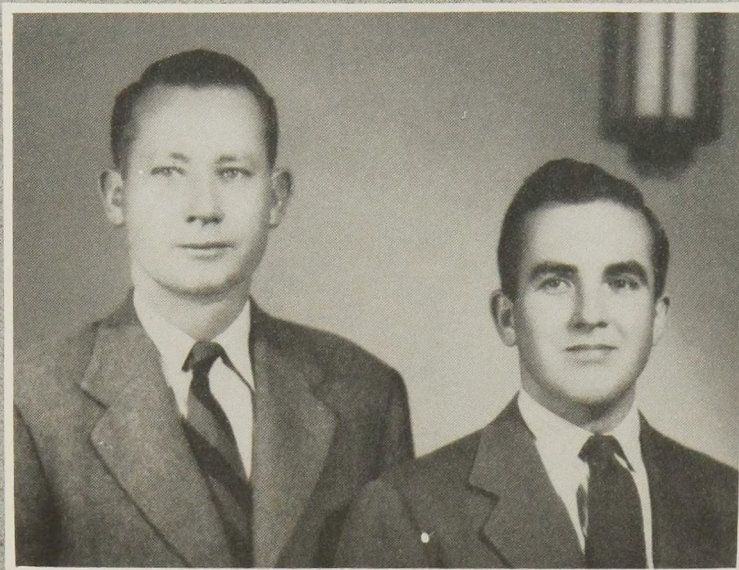


# ATHLETICS

# Foot



TOP ROW: Walter Garcia, Bill Doyle, Jimmy Billings, Bruce Merritt, Victor Heyman, Fred Minshall, George Linton, Jerry Simmons, Jean Stern, Alan Robinson, Coach McWilliams. MIDDLE ROW: John Rael, Bill McWilliams, David Holmes, Co-Capt. Walter Cranford, Pete Pyburn, Kenneth McClesky, Bob Winks, Bob Burtenshaw, Pat Baca, Bobby Martinez. BOTTOM ROW: Jim Johnstone, Jim Wearin, Secundino Sandoval, Tony Salazar, John Wells, Pete Watson, Grady McKinley, Jack Tucker, Bosco Hohner, Jimmie Martinez.

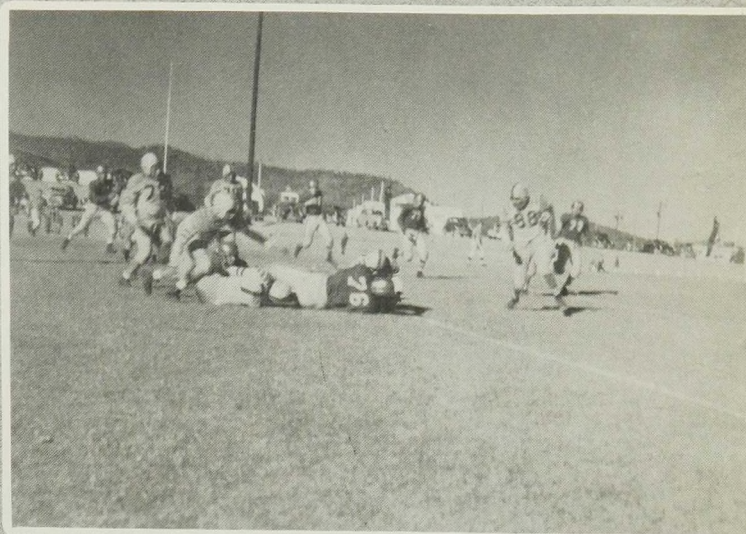


Head Coach Wm. D. McWilliams and Ass't. Coach Tracy Tripp

These two men are greatly responsible for the large success of the Los Alamos football squad, through their strong knowledge of the game and great emphasis of clean living and good, hard, clean football.

# ball

This is an action picture taken from the Santa Fe Indian vs. Los Alamos game. The picture shows Jack Tucker coming in for a tackle on an end run. Schedule: St. Catherine Indian School 0 - Los Alamos 26; McCurdy Mission School 0 - Los Alamos 27; Taos Municipal 0 - Los Alamos 27; Espanola 14 - Los Alamos 13; Aztec 6 - Los Alamos 6 (Tie); Santa Fe Indian School 21 - Los Alamos 27; Clayton 20 - Los Alamos 20 (Tie).



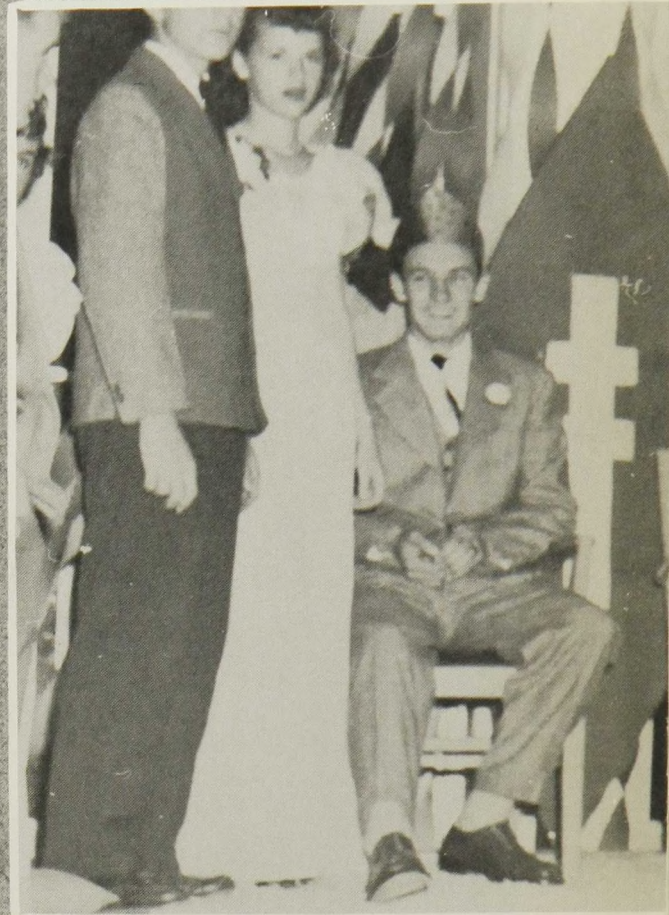
This is also an action picture taken from the Santa Fe Indian game in which the Hilltoppers triumphed 27-21. Pete Watson is being dragged down after a long end run. The Hilltoppers were very successful considering their small size and lack of a strong reserve section. They won four, tied two, lost one. The small Hilltoppers faced several strong teams during the season, being out-weighted by as much as twenty pounds per man. These boys were known throughout the Northern Rio Grande Conference as the scrappiest team of boys to be found. Winding up the season in second place in the Conference, the team placed five boys on the All-Conference Football Team. We are very proud of the boys and very grateful for the wonderful coaching staff.

# Homecoming



Homecoming Queen is being crowned by Co-Capt. Walter Cranford, Queen's Attendants and their dates are looking up.

The Los Alamos Football Homecoming Football Queen, Pauline Clark, elected by popular vote of the student body, shown after her coronation.



Homecoming celebration was started off by a huge bonfire, followed by a snake dance which covered the town. After the 27-21 defeat of the Santa Fe Indian School, celebration was ready to start. With dim lights and soft music, everyone seemed to have a wonderful time at the homecoming dance. The coronation of the King and Queen took place at 10:00 P.M. King, Leon

# oming



Ross, and Queen, Pauline Clark, were escorted to their thrones by Ann Brooks and Walter Cranford. Both Pauline and Leon were crowned, and Pauline was presented with a lovely bouquet of yellow chrysanthemums. Their attendants were Ann McClelland, Dale Allen, Mary Helen Worthington, and Carol Keith.



Cheerleaders lead the crowd in a yell at the beginning of the homecoming bonfire.

The crowd looks on as the high pile of wood goes up in smoke, taking with it a football dummy of the Indian School.



# Basketball



Pete Watson, Capt. and first string All-Conference forward.

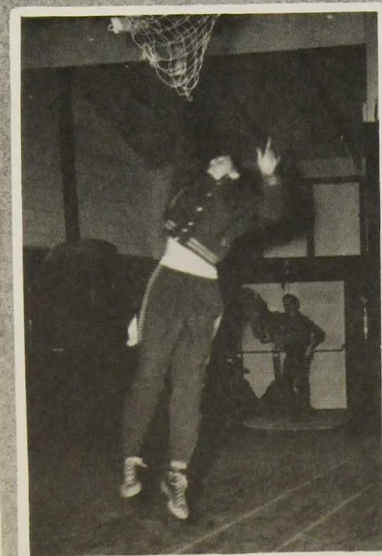
Jimmie Martinez, forward and leading scorer on the hilltopper squad.

Walter Cranford, Guard, potential on both offense and defense.

Bobby Martinez, Guard, expert on defense and team playmaker.

Jerry Jarman, Center, height of the topper squad and potent on offense and defense.

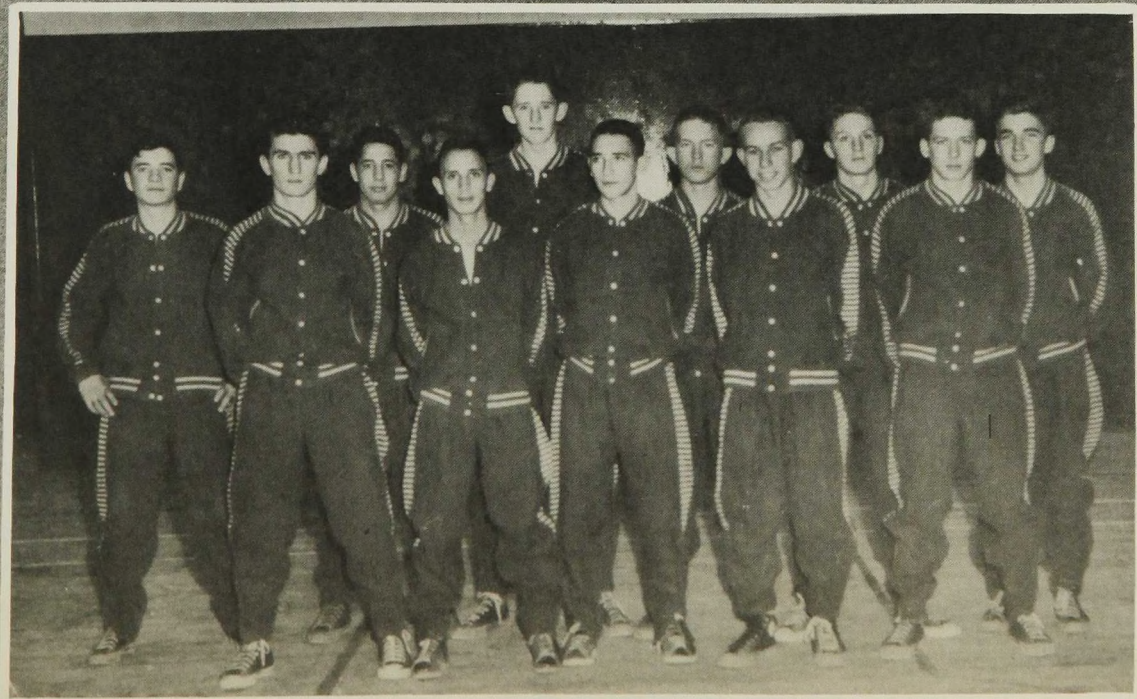
This is an action shot taken from the Espanola vs. Los Alamos game showing Jerry Jarman going high into the air for a rebound.





Victor Gonzales, \*Walter Cranford, Pat Baca, \*Jimmie Martinez, \*Jerry Jarman, \*Bob Martinez, Billy McWilliams, Jerry Cole, Jean Stern, \*Capt. Pete Watson, Billy Fox (\*Starting Lineup).

The hilltopper squad suffered greatly from the lack of height. They did not win too many of their games, but they fought each game to the last whistle. The local squad will always be remembered for their valiant fight in the District Tournament. The Hilltoppers, pace by Capt. Pete Watson, lost out in the Consolation quarter-finals. Pete Watson placed as first string forward on the Northern Rio Grande Basketball Conference team.



# Cheerleaders



Patty Berry, Mary Helen Worthington, Carol Keith, Dale Allen.

On September 23, 1948, seventeen girls tried out for the cheerleading positions at Los Alamos High School. The girls demonstrated their talent at leading cheers to the student body, and then ballots were distributed to the students, who voted for their choice of the four best cheerleaders. Those elected are pictured above, with Patty Berry being the only new addition to this year's group.



## PEP CLUB

TOP ROW: Jo Anne Griffin, Ann McClelland, Pat Highleyman. MIDDLE ROW: Pauline Clark, Jimmie Lea McMillan, Nancy Neal, Mary Donathan, Pat Nendell, Sandra Goodson, Phyllis Ballow, Catherine Mayo, Dorothy Thornton, Pauline Lujan, Margie Abbott. BOTTOM ROW: Joan Bryan, Kathleen Reamy, Frances Armstead, Jackie Billings, Lucy Alvidres, Frances Smith, Sue Kerr, Norma Jean Lacy, Jerry Haeffner, Mary Lou Jonnard, Sally Radebaugh, Joanne Redmon. PEP CLUB OFFICERS: President, Ann Brooks (Not Pictured); Vice-President, Pat Highleyman; Secretary, Ann McClelland; Treasurer, Jo Anne Griffin; Supervisor, Miss Mildred Burghardt.

# Lettermen's Club

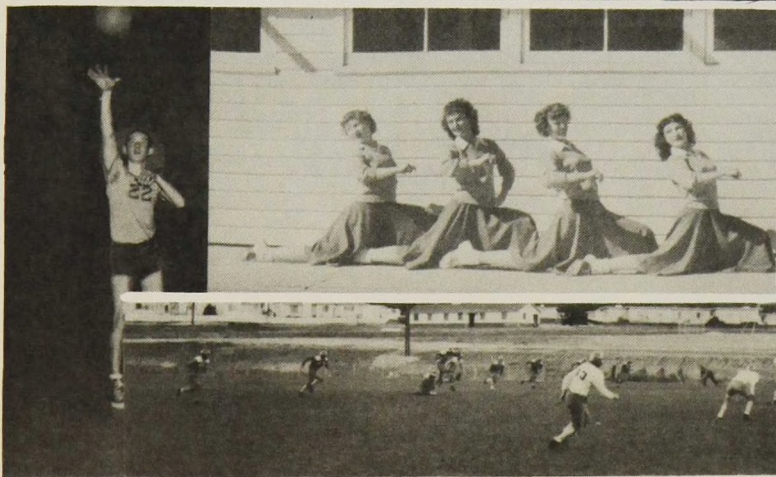
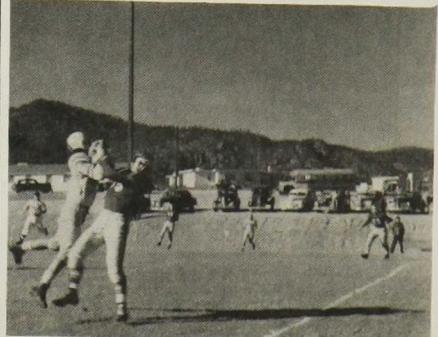
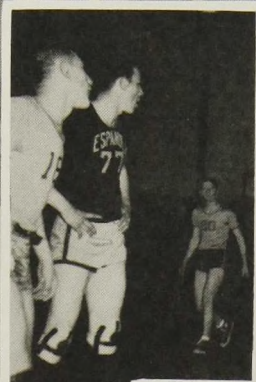
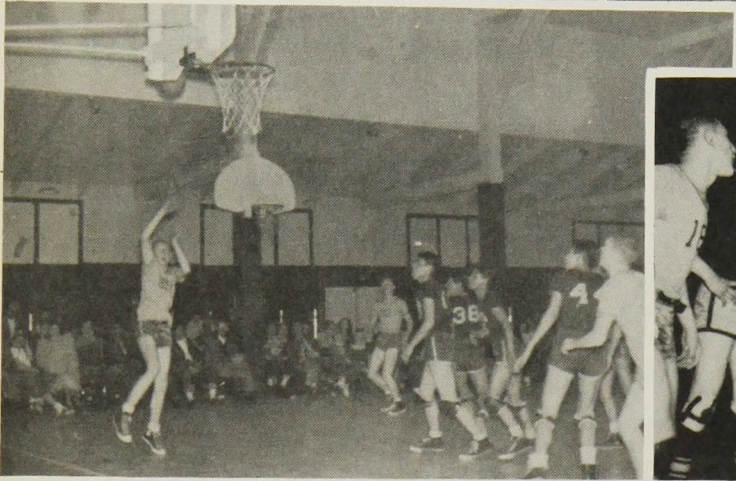
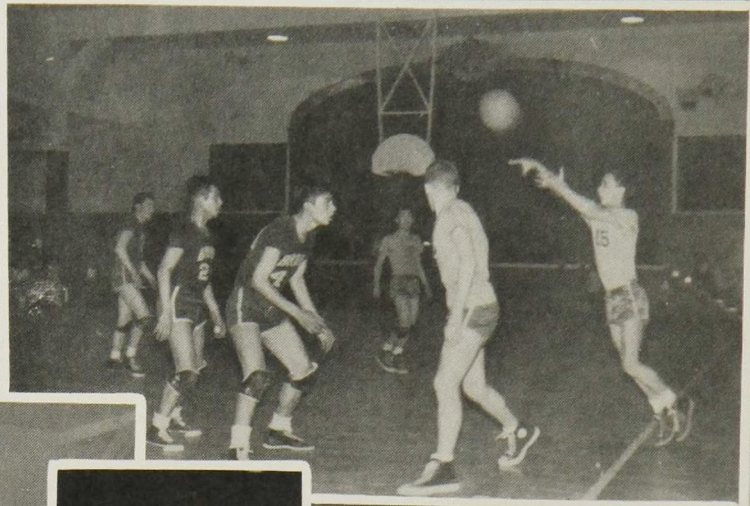
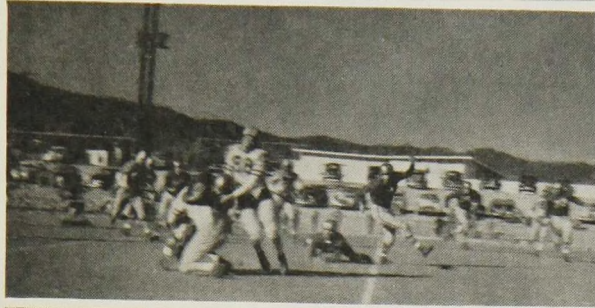
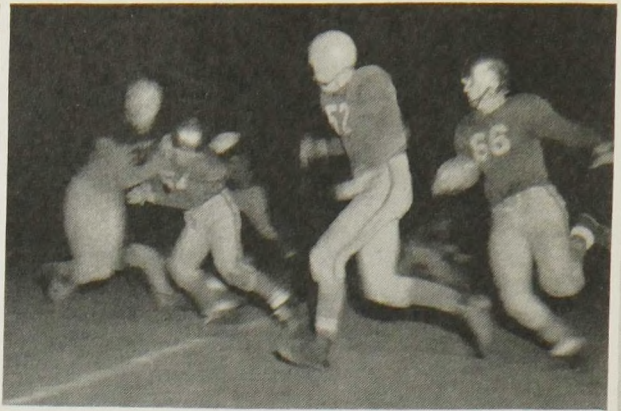


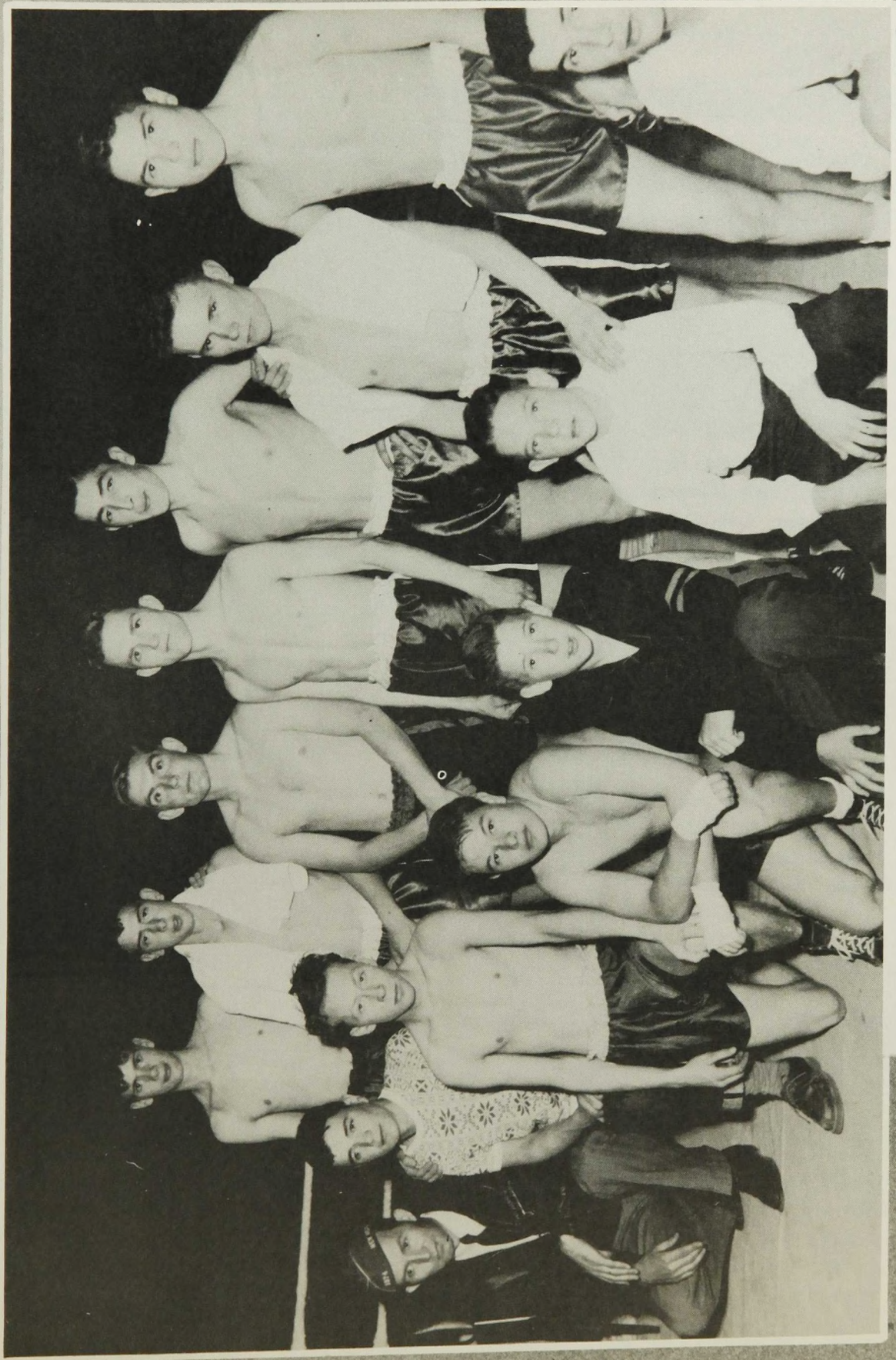
TOP ROW: Bill Fox, Jean Stern, Bobby Martinez, John Wells, Victor Gonzales, Victor Heyman. MIDDLE ROW: Coach McWilliams, Bosco Hohner, Jerry Simmons, Jimmy Billings, Pete Pyburn, Jimmie Martinez, Grady McKinley, Walter Cranford, Bob Evans. BOTTOM ROW: Bob Winks, Geroge Linton, Pat Baca, Jack Tucker, Pete Watson, Walter Garcia, Billy McWilliams.



All-Conference  
 Jimmy Billings, Jack Tucker, Co-Capt., Walter Cranford, Billy McWilliams  
 (Bill Doyle, Not pictured)

# The Finest



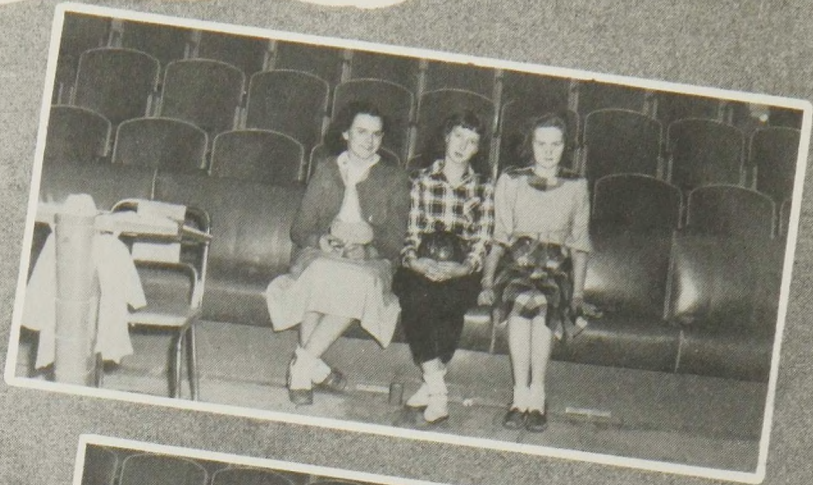


Boxing--Sponsored by V. F. W.  
STANDING: Rex Goranson, Walter Garcia, Pete Pyburn, Jack Lane, Edward Tapia, Johnny Tucker, Leo Maes. KNEELING: John Schofield, sponsor, Victor Gonzales, Ed Williams, Kenneth McClesky, Charlie Badsgard, Tommy Rape, Joe Porton, Instructor.

# Bowling League "A"

Barbara Hillhouse, Polly Richardson (Captain), Joan Carroll.

Lucky Strikers - no sponsor.



Frances Armstead, Sandra Goodson, Kathleen Reamy (Captain), Diane Gilmore, Dixie Gravitt.

PinBusters - sponsored by the Veteran's Club.



Bobby Harleson, Frances Smith, Janet Nendell (Captain), Joann Darrell, Dolores Webb.

All Stars - sponsored by the Veteran's Club.

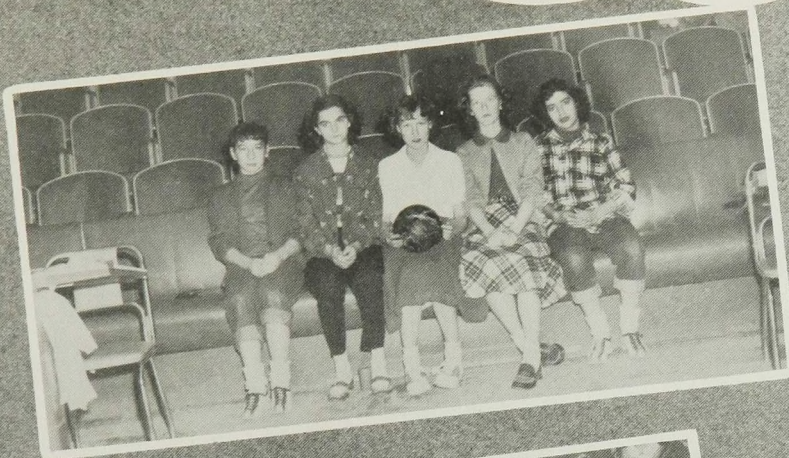


Vivian Wentz, Shirley Hoff, Laurencita Gonzales (Captain), Irene Fulgenzi, Rupe Baca (not shown).

Pin Quintet - sponsored by the American Legion.

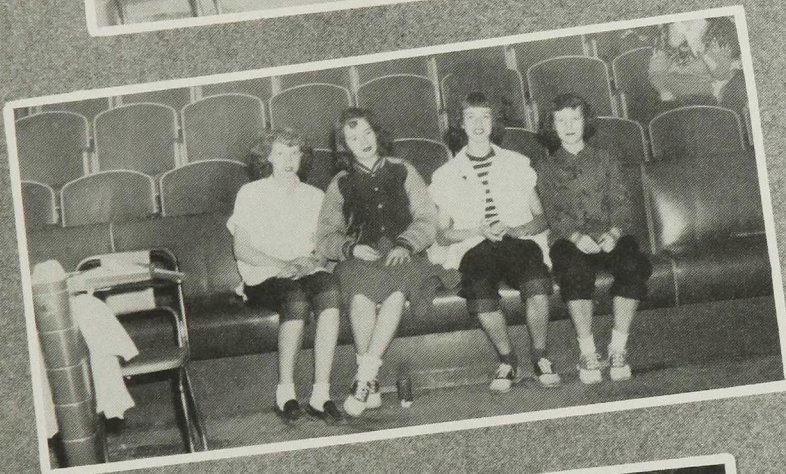


# Bowling League "B"



Rheba Clearman, Bernice Little, Carol Keith (Captain), Jimmie Lea McMullan, and Grace Olivas.

Alley Cats - sponsored by the Vets' Club II.



Darlene Ogren, Sue Kerr, Norma Jean Lacy, Joanna White (Captain), and Joan Dell (not pictured).

Skyliners - sponsored by the Carco Air Lines (Clark Carr).



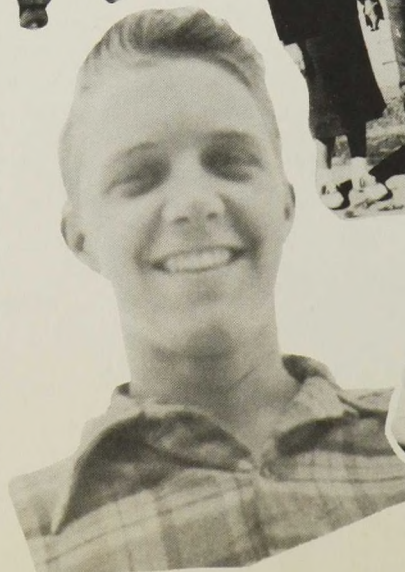
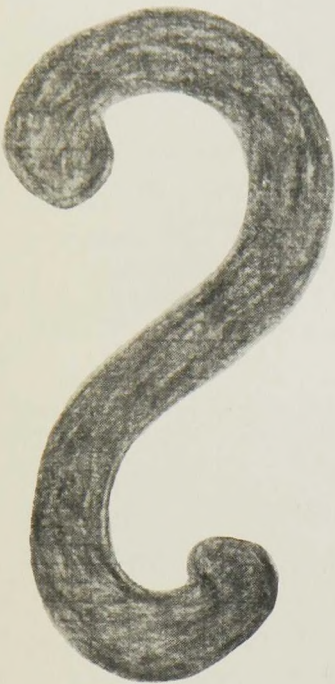
Joyce Stewart, Pat Nendell, Joan Nash (Captain), Jo Anne Griffin, and Beverly Christopher.

Pintoppers - sponsored by the Vets' Club I.



Marlene Williams, Joan Bryan, Jean Murray, Jane Campbell (Captain), and Jana Haley (not pictured).

Line Hoppers - sponsored by Kruger's



HOMECO

GA

8:00



**ADVERTISEMENTS**

# BALLEW'S BETTER BUY'S

You cannot select without selections

That's why more and more people come to our big lot.

BALLEW MOTOR COMPANY

Chrysler-Plymouth Sales and Service  
"Just west of the Capitol"

Phone 3040

218 Montezuma



MADEMOISELLE

HAT

SHOP

M'lle proudly presents her exclusive collection of beautiful hats in a wide variety of colors . . . including cloud, bittersweet, coffee, grey, black, cyclamon pink, turquoise, claret, and browns. M'lle also is proud to offer again rich imported hats in all styles and colors.

ACROSS THE STREET FROM THE

POST OFFICE

In the Sena Plaza Bldg. - No. 75

Compliments

of

ROWLEY BAKERY

Sante Fe

New Mexico

IN  
MEN'S  
WEAR

"The Place to go . . . .  
For brands you know."

**Moore's**  
Of Santa Fe

THE GIFT CENTER OF NEW MEXICO

Books

Cameras

Pens and Pencils

Stationery

Art Supplies

EVERYTHING FOR EVERYONE

**Santa Fe BOOK & STATIONERY CO.**  
Santa Fe, N.M. Phone 56

COME TO COOKS  
for the finest  
in  
Sporting Equipment  
Albuquerque, New Mexico



Compliments  
of

SANCO MOTORS

Your Friendly Ford Dealer

205 Montezuma  
Santa Fe, New Mexico



Compliments of

Lee's

Outfitters for the family  
Santa Fe, New Mexico

*Lee's*  
INC.

HALL'S

Shoes, Luggage and Accessories

Los Alamos

Only Nationally Advertised Brands Sold

Shoes and Accessories for  
the entire family

MOORE FURNITURE COMPANY

"Everybody wants Moore Furniture"

Riverside at the "Y" Espanola

Complete line of Home Furnishings

Best Wishes

to

Class of '49

MORTON BROTHERS, INC.

SPEER'S DEPT. STORES INC.

The Friendly Store

Featuring Nationally Advertised

Merchandise

Community Center

YOUR FOOD STORES, INC.

Super-Deluxe Market

Self-Serve Meats

Espanola at the Y,  
Riverside



Complete home furnishings

Hardware

Floor coverings - Draperies  
Everything for the home or shop  
Sporting Goods

128 West Palace Ave.  
131 West Palace Ave.

Phone 2040 Main Store  
Phone 312 Household Store

SALES

KAISER



FRAZER

SERVICE

Springfield - Sales Company

Espanola and Riverside  
New Mexico

Congratulations

to the

Class of '49

SANTA FE

ELECTRIC LAUNDRY

Fancy Foods and Meats

PLAZA FOOD STORE

Riverside, New Mexico

Teen Agers of Los Alamos High

We cater to you

Both Boys and Girls!

In Los Alamos it's

TAICHERTS

*The New  
Emporium  
In Old Santa Fe*

**B.F. Goodrich**

JACK KIRK, Manager

Phone 977

129 West Water St.

Best Wishes  
to the  
Class of '49  
  
HOTEL GRANADA

MAYFLOWER COCKTAIL  
LOUNGE  
Santa Fe's Finest  
MAYFLOWER

For the Best  
Malts, Shakes, Sundays, and all  
other dairy products  
go to the  
SANTA FE CREAMERY

LA FONDA  
the Inn at the End of the Trail  
in Old Santa Fe  
FRED HARVEY

Dinner Dancing - Mexican Orchestra  
La Cantina - Restaurant  
News Stand  
David L. Cole, Manager

*La Cocina  
de  
Santa Fe*

ANNABELLA'S  
"Ladies Ready to Wear"  
  
Telephone 2059  
114 East Palace  
Santa Fe, New Mexico

Men's and Boy's Outfitters

Espanola (Riverside), New Mexico

*Becker's*  
· ESPANOLA ·

Compliments  
of  
TIANO'S  
SPORTING GOODS STORE

FRED MACKEY'S  
Nationally known brands  
of clothing for men and boys  
Community Center  
Los Alamos, New Mexico

Compliments of  
EL FIDEL HOTELS

Albuquerque

Santa Fe

Las Vegas

New Mexico

Womens wear, shoes and accessories

For everyone's budget

*the*  
**Guarantee**  
*on the plaza*

BELL STORES, INC.

Your Friendly Store  
in  
Santa Fe - Espanola - Taos

Just  
EVAN B. WILSON

THE PASTRY SHOP

Community Center

Los Alamos  
Phone 2754

for Special Orders and  
Cakes for All Occasions

# Senior



# Carnival



Compliments of  
DE CASTRO STUDIO  
  
Santa Fe, New Mexico

LOS ALAMOS  
DRUG STORE  
  
Phone 3735

COMPLIMENTS OF

**BATRITE** *Food Stores*

LOS ALAMOS  
WESTERN AREA

SANTA FE  
LINCOLN AVENUE

# Kistler-Collister

"Where Albuquerque Shops With Confidence"

Store Hours: 9:00 a. m. to 5:30 p. m.

301 West Central

Phone 3-1795

## MAIN FLOOR

Cosmetics  
Hosiery  
Accessories  
Jewelry-Watch Repair

Shoes  
Sports Wear  
Luggage  
Men's Wear

## MEZZANINE

Appliances  
Linens

Bedding  
Uniforms

## SECOND FLOOR

Suits  
Coats  
Dresses  
Millinery  
Lingerie  
Foundations

Teen Shop  
Baby Dept.  
Fabrics  
Detailing Dept.  
Notions  
Beauty Salon

### Young People Are Safer When They And Their Family Save

Savings produce a sense of security in the family; and that feeling of security is a vital factor in the building of every young person's character and health. Many in this Year Book who are fortunate enough to be able to go on to College will do so because their mother and father, as well as themselves, were far-sighted enough to save for that purpose. Open a Savings Account today in the Los Alamos Agency of The First National Bank of Santa Fe and prepare a safer future. You will receive a friendly welcome.

### THE FIRST NATIONAL BANK OF SANTA FE

Oldest Bank in the Southwest - Chartered in 1870  
Los Alamos Branch  
Member F.D.I.C.

James L. Teare  
Manager

William I. Macgillivray  
Assistant Manager

LOS ALAMOS  
BEAUTY SHOP

Community Center

Phone 3745

See Sam for Men's & Women's  
tailor made  
Suits and Shirts  
also  
Relining and all kinds of Alterations

Pressing While You Wait!

LOS ALAMOS TAILOR SHOP

528 19th Street Phone 4170

Compliments of  
BLACK AND VEATCH  
Consulting Engineers

Main Office  
Kansas City, Mo.

Compliments of

WHITE SWAN LAUNDRY

Santa Fe, New Mexico

RUSSELL'S FLOWER SHOP

142 Lincoln                      2212 Ivy  
Santa Fe                         Los Alamos  
Phone 12                         Phone 2935

We operate the largest greenhouses  
in N.M.  
Flowers telegraphed Everywhere

# *Autographs*

This page compliments of

TOWN COUNCIL

Los Alamos, New Mexico



Oh, monstrous world!

Just before the battle,  
mother.

Be nice if she could  
drive it.



Ipana Smile?  
Ipana Smile!

Line forms to the  
right, girls.



And then, she fell in.

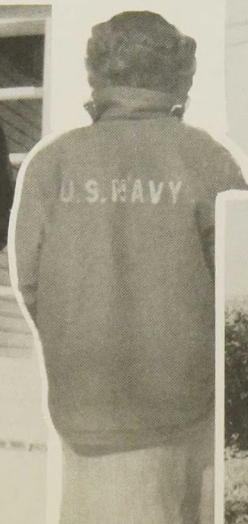
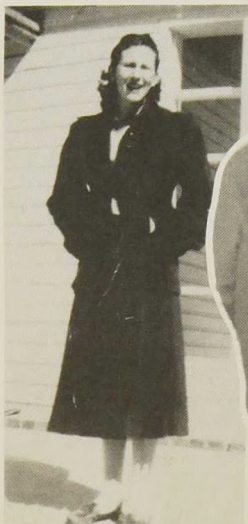


Morning after the  
night before.



Bobby soxer deluxe.

Hang on, Beautiful.



Ain't they sweet?

Did the shovel  
break?



Anchors Away!

"Lady" Bluebeard?

Compliments  
BAPTIST CHURCH  
Los Alamos

Congratulations  
To The  
Smartest Group In  
Los Alamos  
For Smart Gifts In  
Nationally Advertised  
Jewelry Gifts  
Come In To



Community Center - Los Alamos

Compliments  
CENTRE - HILL  
THEATRES  
Motion Pictures At Their Best

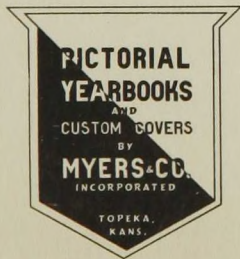
Albert Gottlieb      Bernard Gottlieb  
Compliments  
Of  
THE LOS ALAMOS BOWL  
Community Center  
The Brightest Spot on the Hill  
Bowling - Billiards  
Shuffleboard - Skee Ball  
Freida Gottlieb      Ruth Gottlieb



# Chinted Seniors



HIGH SCHOOL LIBRARY  
LOS ALAMOS, NEW MEXICO



HIGH SCHOOL LIBRARY  
LOS ALAMOS, NEW MEXICO





